



Report No. 12166
Date: 03/16/10

Fuel Reduction Pilot Program

CONDUCTED AT

NYU – BRITTANY HALL

LOCATED AT

55 EAST 10 STREET, NEW YORK, NY10003

FOR

New York University

**TEST RESULTS
FOR A
STEAM BOILER**

A Confidential Report
Prepared by
Intellidyne LLC



303 Sunnyside Blvd., Ste 75
 Plainview, NY 11803
 Phone: 516-676-0777
 Fax: 516-676-2640

Test Report

Report No. 12166

Date: 03/16/10

Customer:

New York University
 740 Broadway, New York, NY 10003

 Contact: Cesil Scheib

Test Site Location:

NYU - Brittany Hall
 55 East 10 Street, New York, NY 10003

Test Type: HEATING AIR CONDITIONING REFRIGERATION OTHER: _____
 Product Tested: HW LCH LCS CHW CHS AC CAC RU OTHER: _____

Type of Equipment:

Manufacturer: RockMills
 Model: MP200
 Capacity / SetPt: 200 HP / 4-5 psi, aquastat 175 F
 Fuel Type: #6 Fuel Oil
 Application: Steam Boiler For Heat with DHW coil
 Area Served: Whole Bldg.
 Miscellaneous: UOAO[|ãP^æVã ^|ã| } d[||ã * A@ææ

Test Start Date: 01/22/10
 Test End Date: 02/22/10
 =====
 No. of Days in Test: 32

BURNER RUN-TIME: in HRS. in MIN.
 IntelliCon ON-DAYS: 150:53:47
 IntelliCon OFF-DAYS: 164:26:29 RUN-TIME was reduced by: 8.24%

BURNER USAGE FACTOR:
 IntelliCon On-Days: 39%
 IntelliCon Off-Days: 43%

HEATING DEGREE-DAYS (FOR TEST PERIOD)
 IntelliCon ON-DAYS: 283 It was 5.6% Colder on the On-Days.
 IntelliCon OFF-DAYS: 268
 =====
 Total Degree-Days: 551

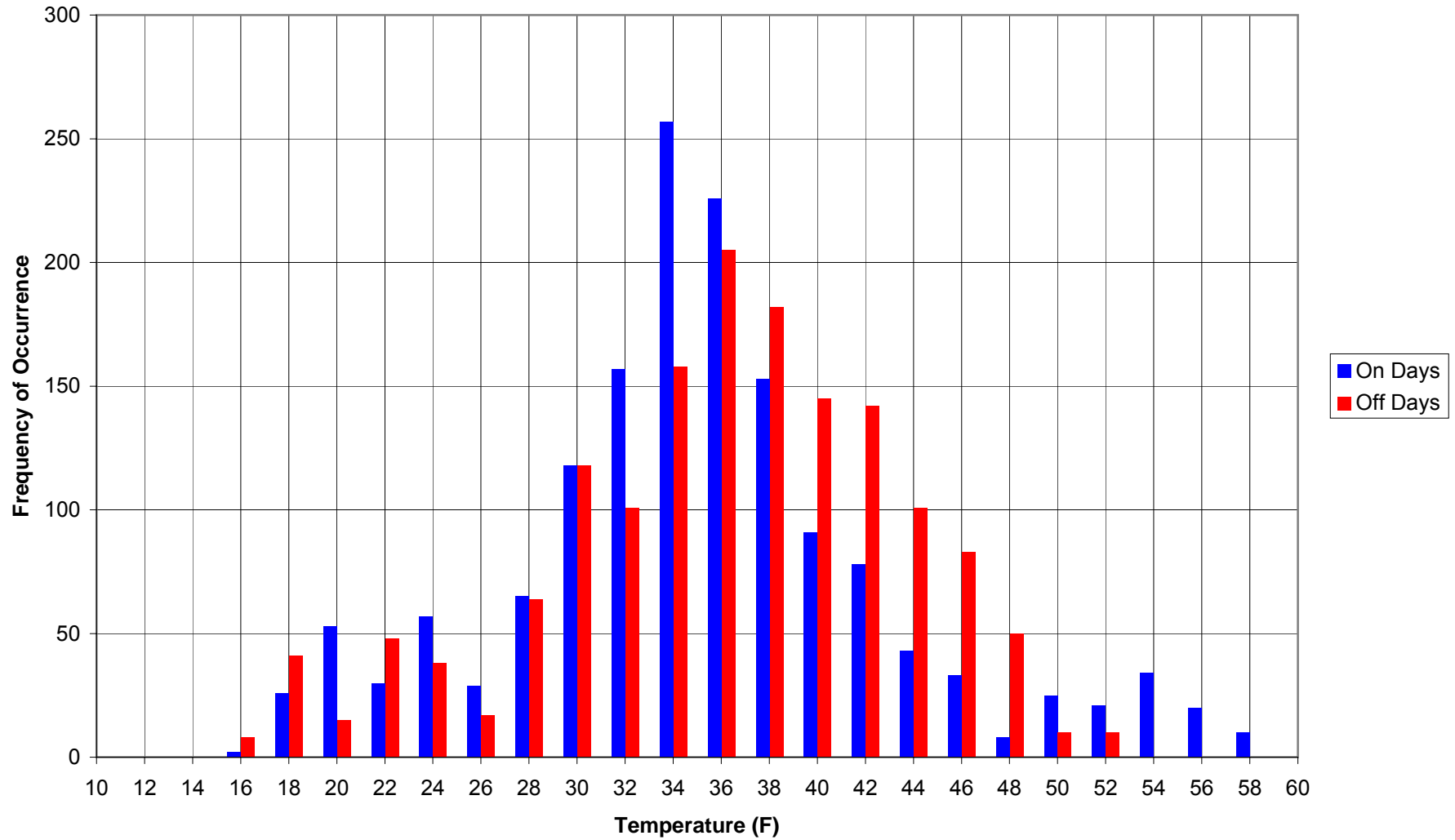
SOLAR LOAD COMPENSATION: (Lumens/Sq. Ft.)
 IntelliCon ON-DAYS: 322194
 IntelliCon OFF-DAYS: 417575 It was 22.84% Sunnier on the OFF-Days.

BURNER CYCLING REDUCTION:
 IntelliCon ON-DAYS: 333
 IntelliCon OFF-DAYS: 404 Cycling was reduced by: 17.6%

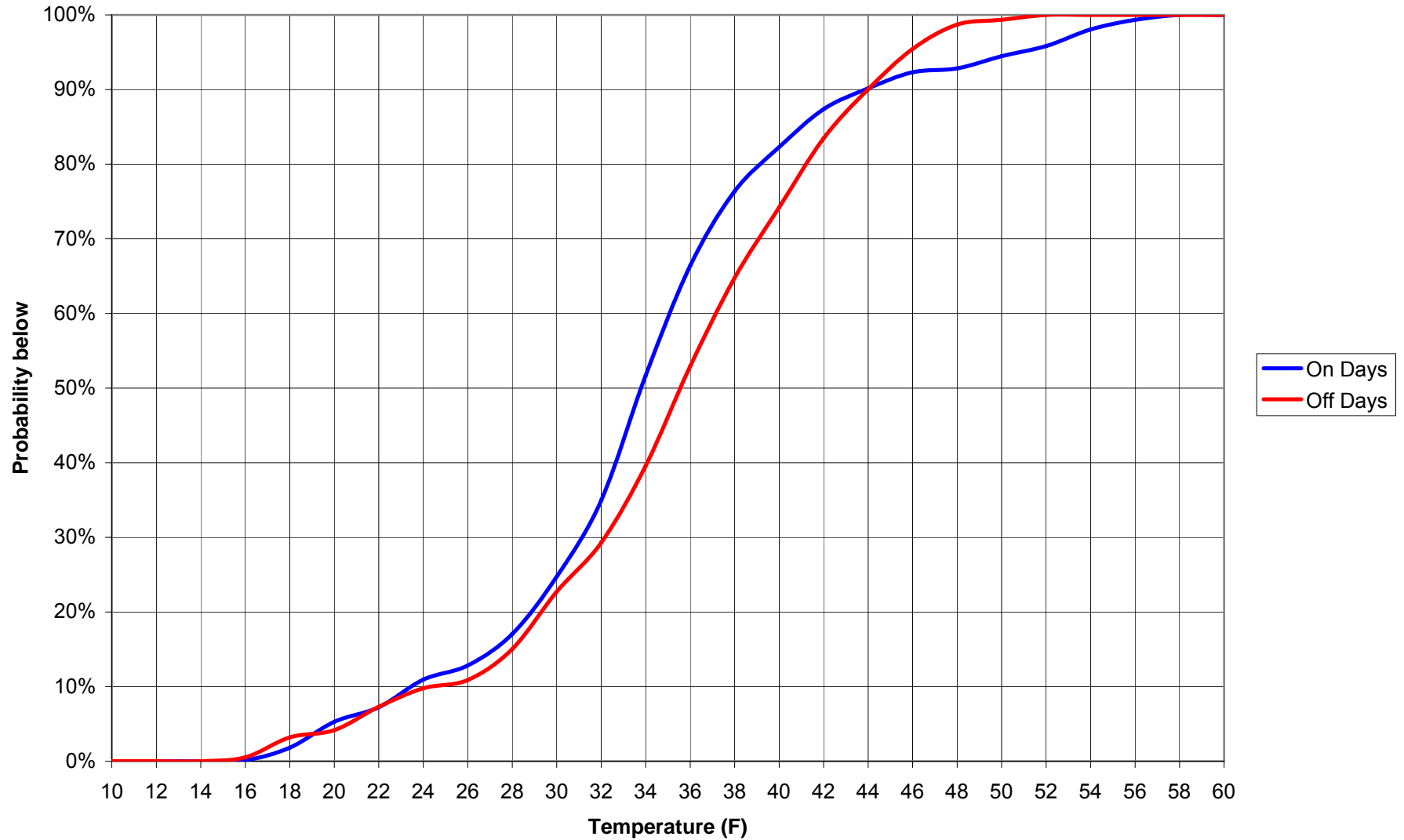
Savings = 13.09%

COMMENTS: Note: Even though it was more than 22% sunnier on the Off-Days, the level of Lumens/ft² was such a low level that solar influence was negligible and NOT compensated for. The effect of compensation would have yielded higher savings results. The savings results were normalized for Heating Degree-Days only.

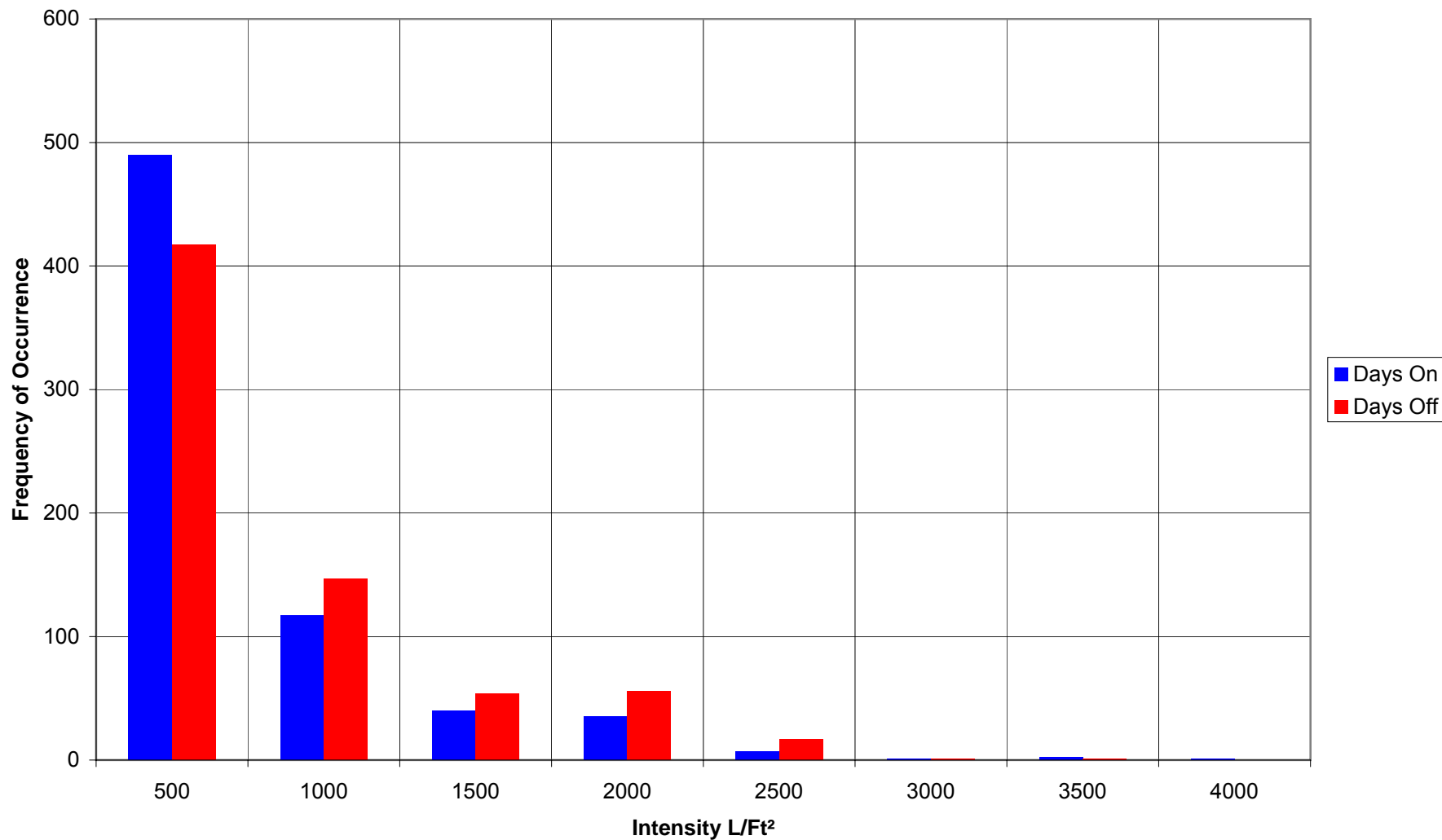
NYU - Brittany Hall
Outside Air Temperature Histogram (1/22/10 - 2/22/10)



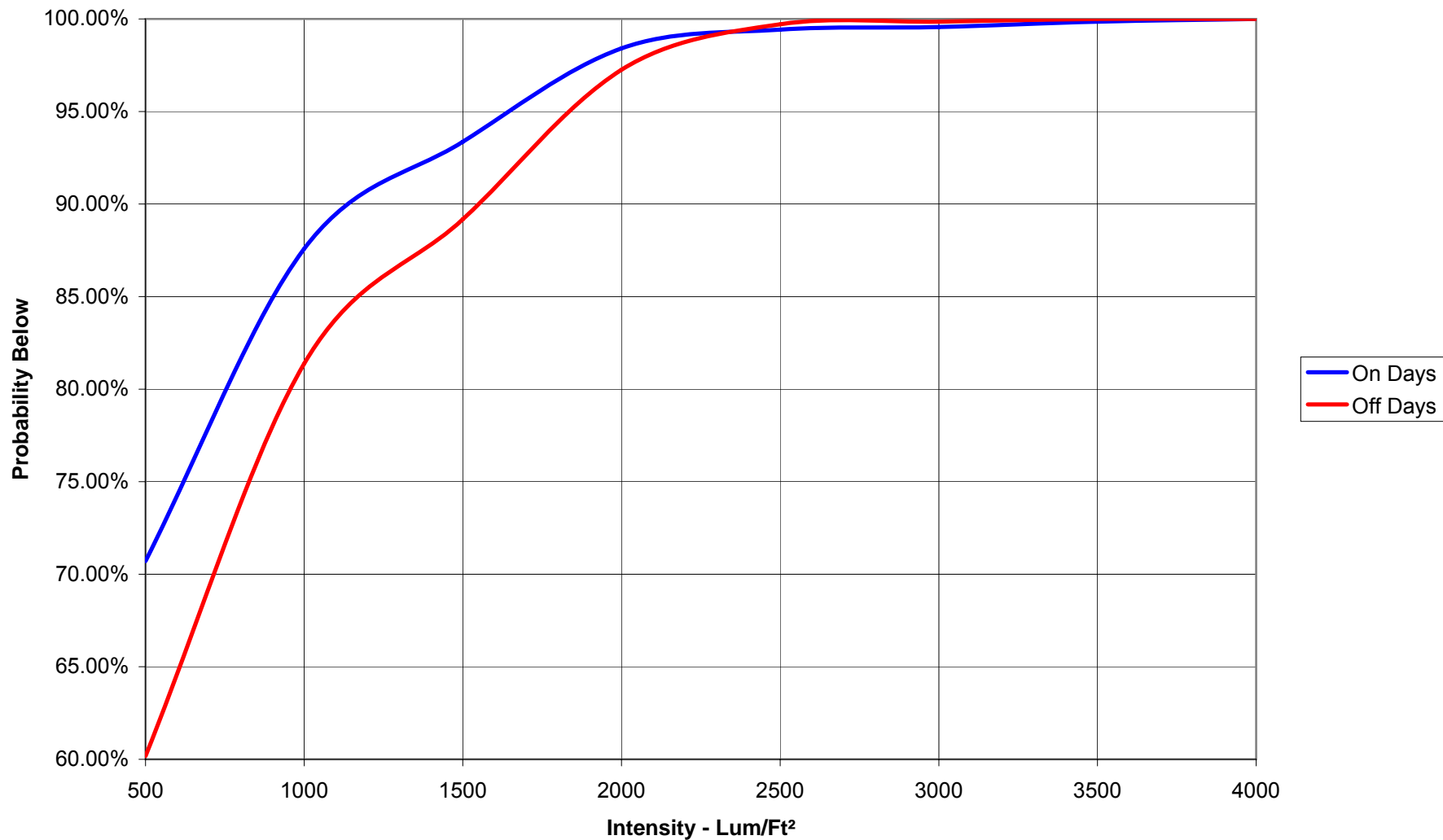
NYU - Brittany Hall
Outside Air Temperature Probabilities (1/22/10 - 2/22/10)



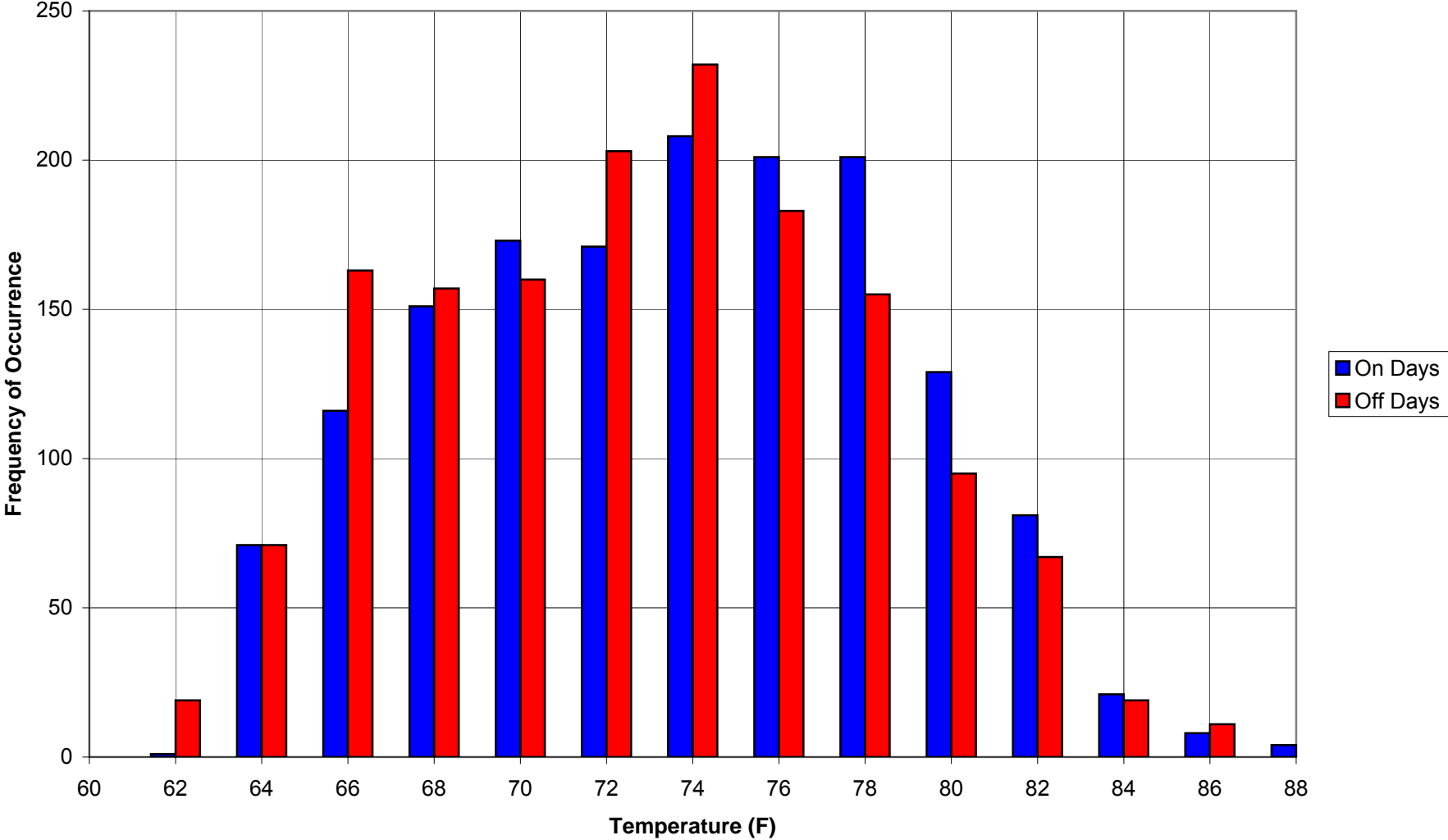
NYU - Brittany Hall
Solar Influence Histogram (1/22/10 - 2/22/10)



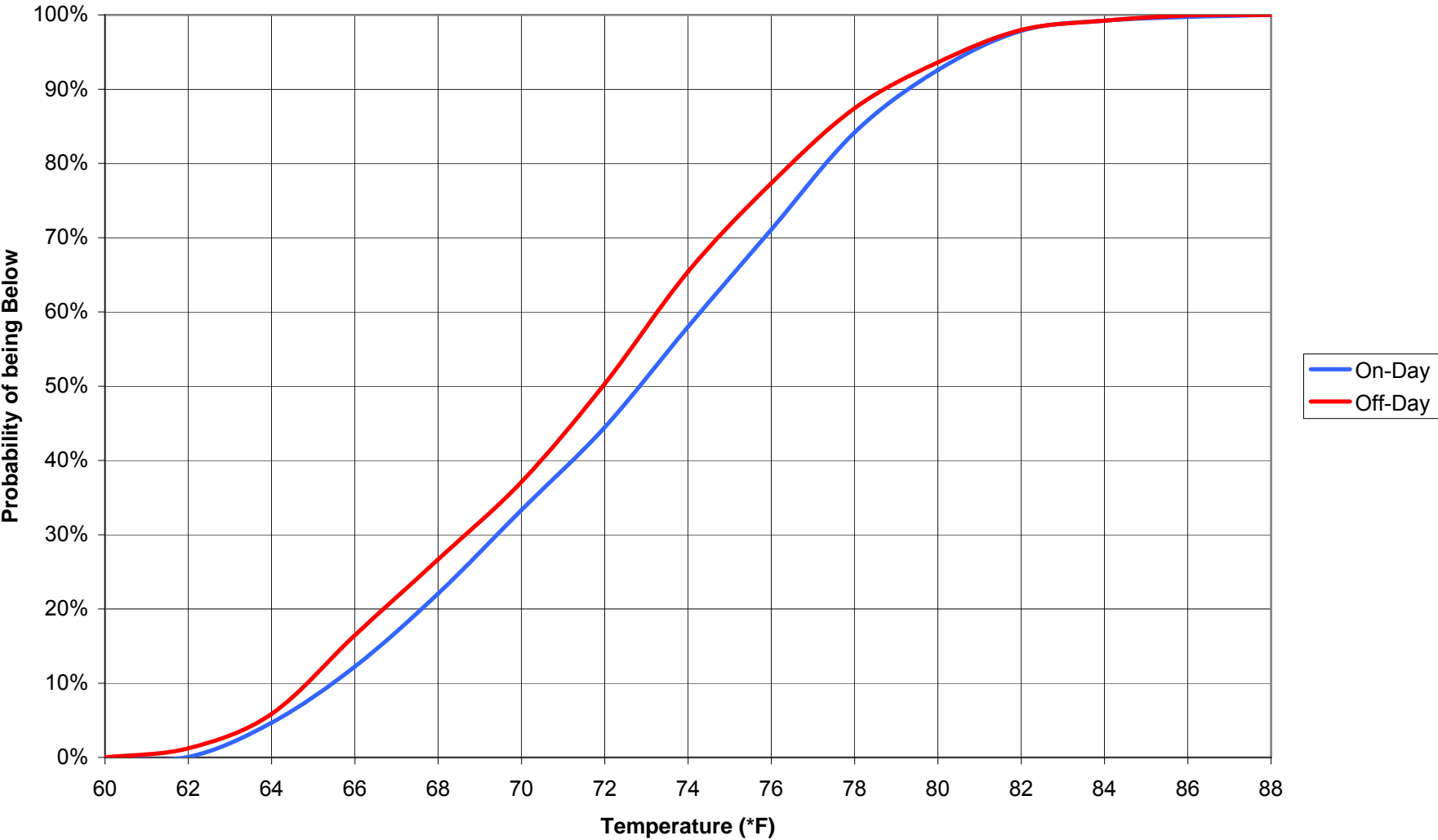
NYU - Brittany Hall
Solar Influence Probabilities (1/22/10 - 2/22/10)



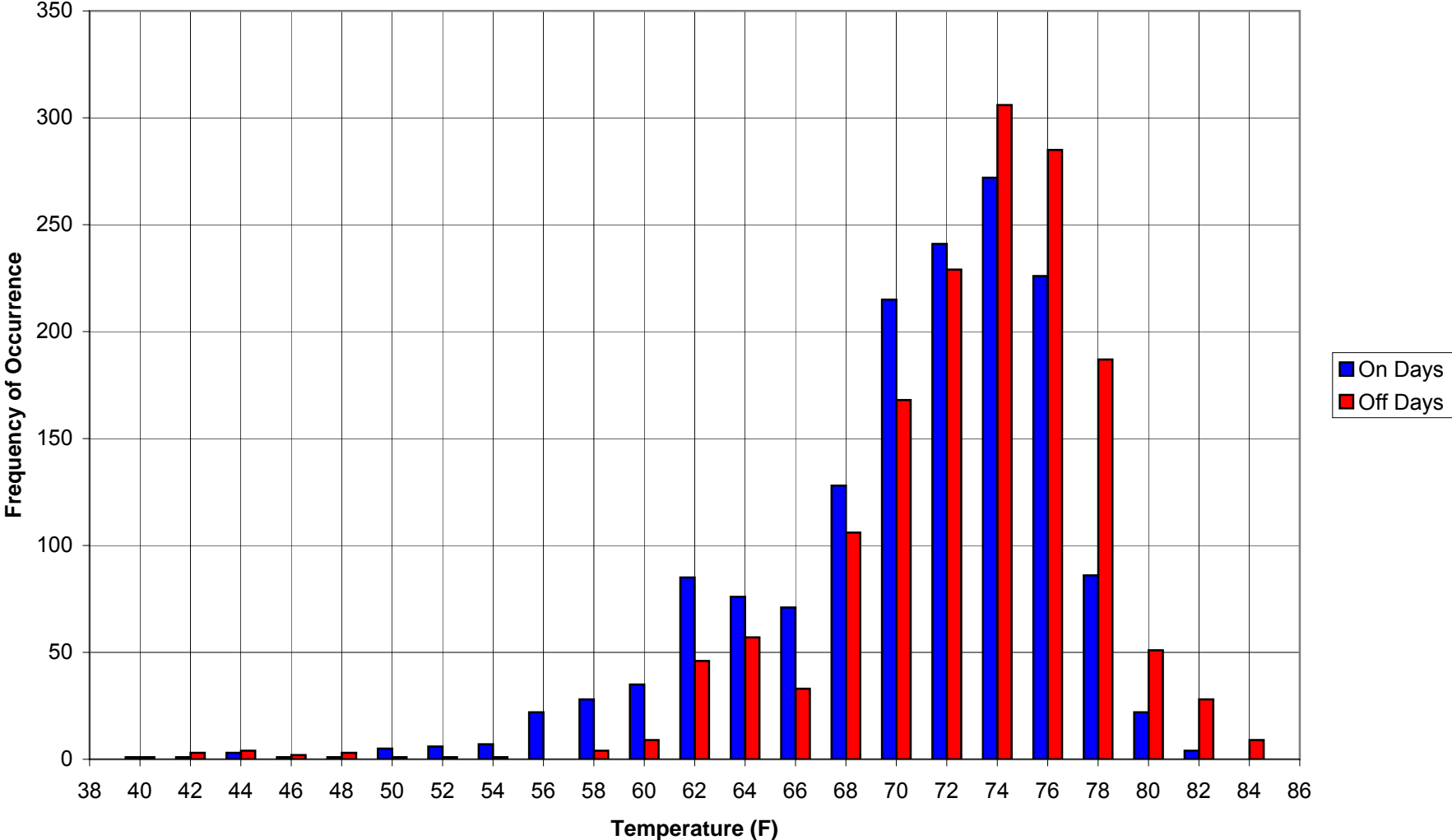
NYU - Brittany Hall, Room 1607A
Space Temperature Histogram (1/22/10 - 2/22/10)



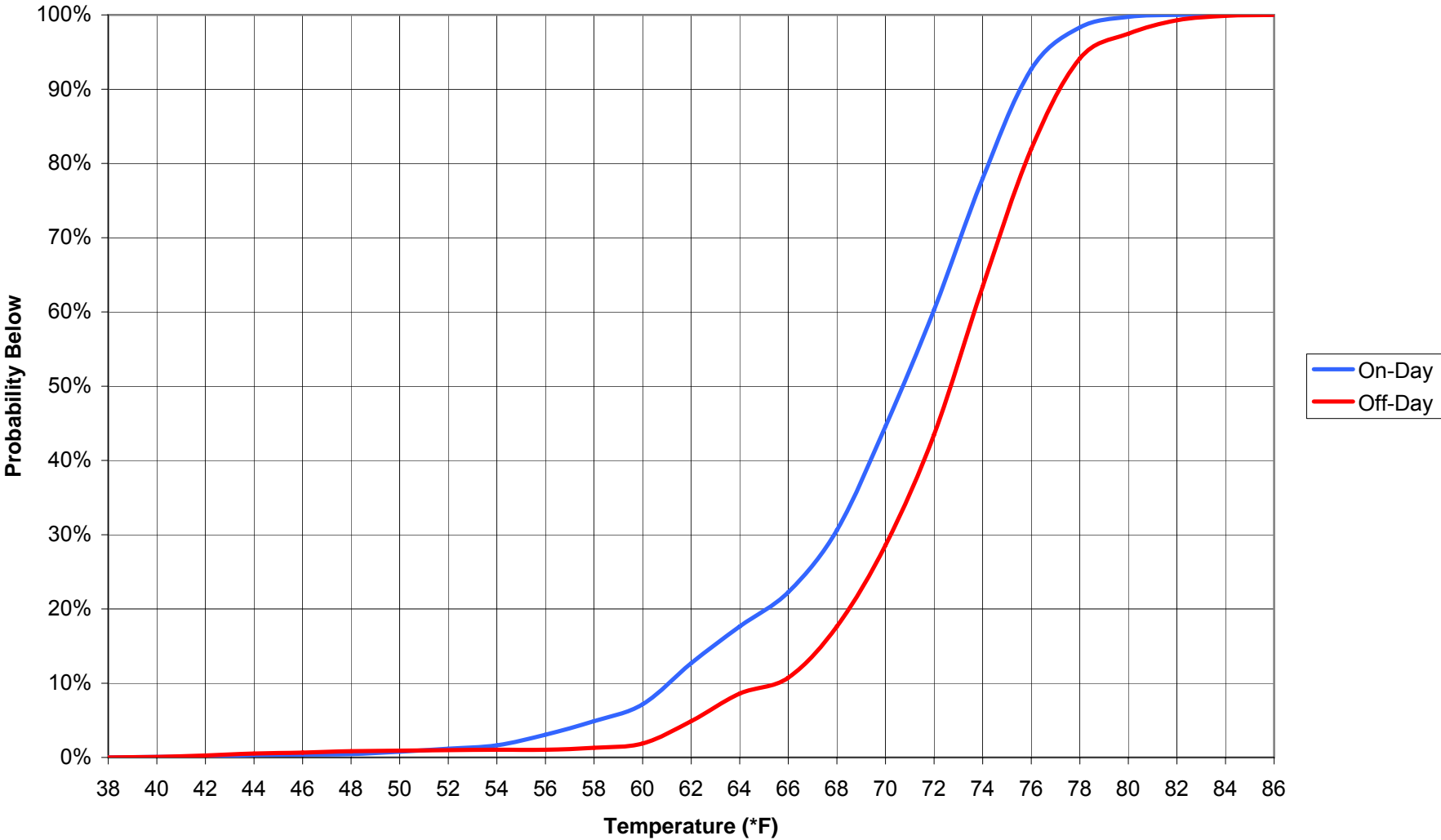
NYU - Brittany Hall, Room 1607A
Space Temperature Histogram (1/22/10 - 2/22/10)



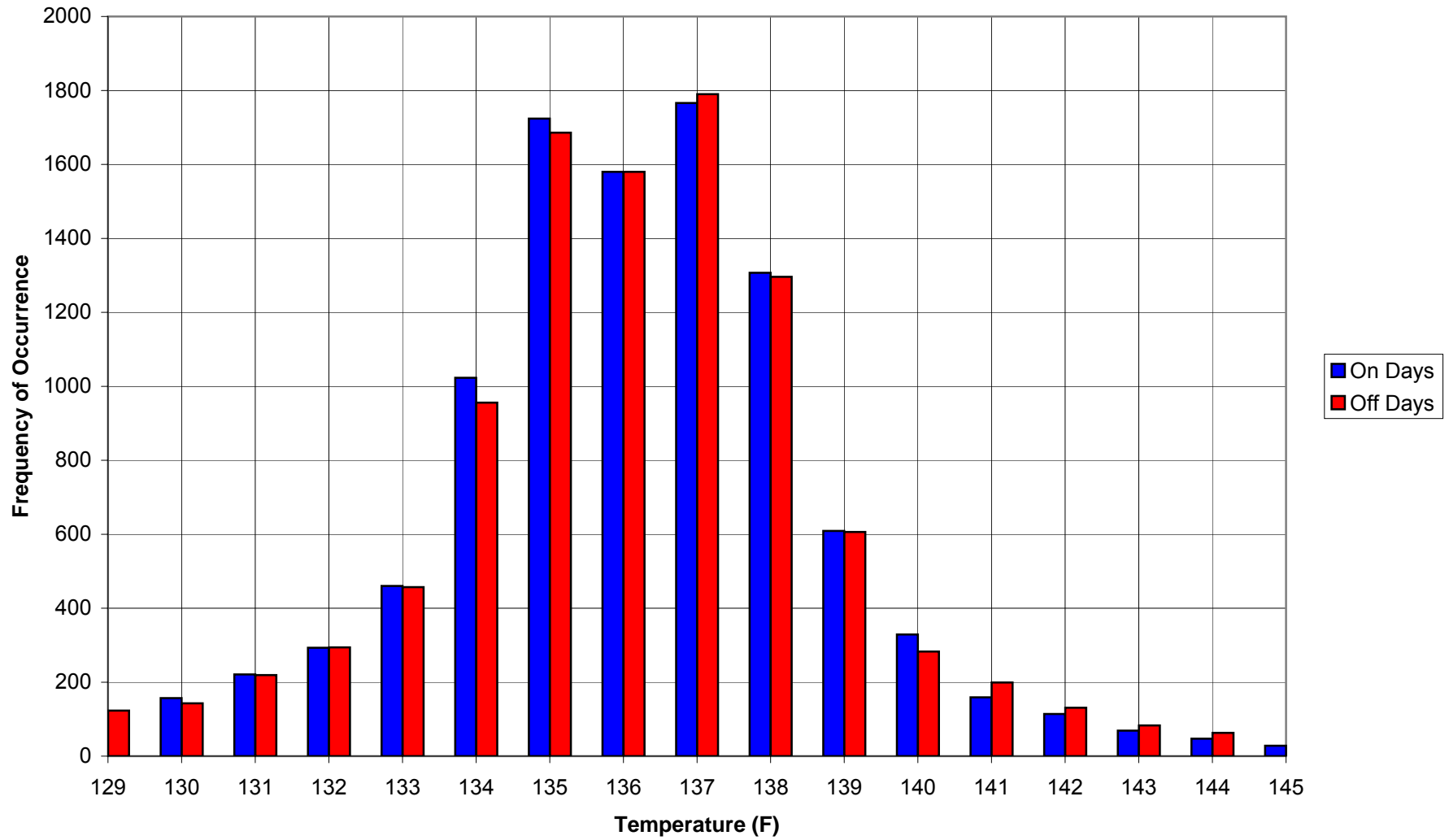
NYU - Brittany Hall, Room 1607A
Space Temperature Histogram (1/22/10 - 2/22/10)



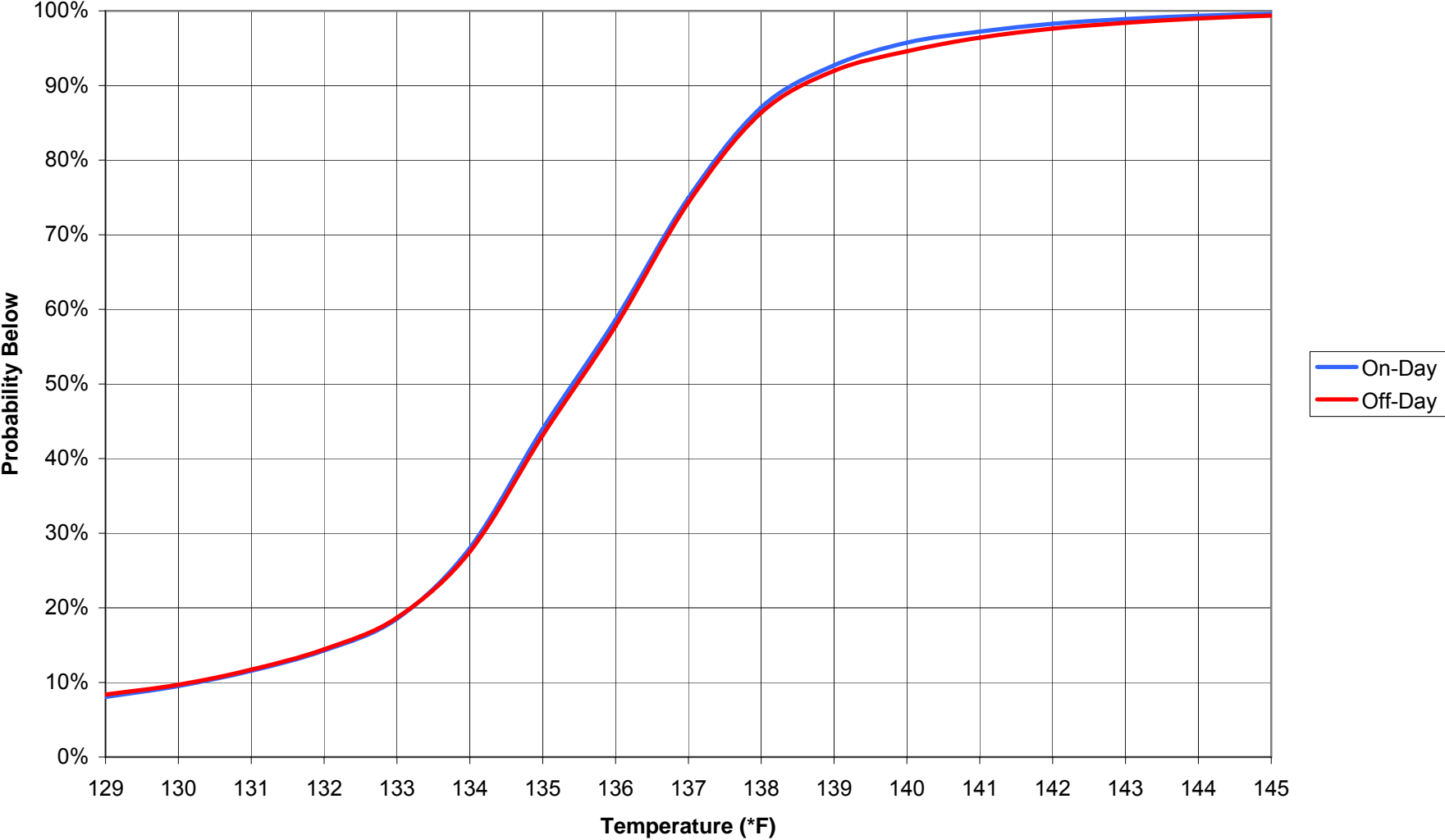
NYU - Brittany Hall, Room 1607A
Space Temperature Histogram (1/22/10 - 2/22/10)



NYU - Brittany Hall
Domestic Hot-Water Histogram (1/22/10 - 2/22/10)



NYU - Brittany Hall
Domestic Hot-Water Probabilities (1/22/10 - 2/22/10)





New York University

55 East Tenth

Brittany Residence Hall

