



Report No. 12156-1
Date: 18/05/07

CHINA HUAYANG TECHNOLOGY & TRADE CORPORATION

Electricity Consumption Reduction Pilot Program

TEST RESULTS
FOR:
WALK-IN REFRIGERATION
AND
SPACE COOLING

Located at:

GUO YI HOTEL.
NO.1 XICHENG DISTRICT WENXING DONG
JIE BEIJING, CHINA 100044

A Confidential Report
Prepared by
Intellidyne LLC



90 Pratt Oval
 Glen Cove, NY 11542
 Phone: 516-676-0777
 Fax: 516-676-2640

Test Report

Report No. 12156-1

Date: 18/05/07

Customer:

China Huayang Technology and Trade Corporation
 Longji Building
 No. 67 Jinbao Street
 Dongcheng District
 Beijing, China, 8000

Test Site Location:

Guo Yi Hotel
 No. 1 Xicheng District Wenxing Dong
 Jie Beijing, China, 100044

Test Type: HEATING AIR CONDITIONING REFRIGERATION OTHER: _____
 Product Tested: HW LCH LCS CHW CHS AC CAC RU OTHER: _____

Type of Equipment:

Manufacturer: TICA
 Model: TAC204C (4 UNITS)
 Capacity / SetPt: 20 Ton (2 x 10 Ton Compressors) EACH UNIT
 Fuel Type: ELECTRIC
 Application: Chilled Water for Air Conditioning
 Area Served: Restaurant Area
 Misc. _____

Test Start Date: 05/03/07
 Test End Date: 05/10/07
 No. of Days in Test: 8

TOTAL COMPRESSOR RUN-TIME: in HRS. in MIN.
 IntelliCon ON-DAYS: 81:26:42
 IntelliCon OFF-DAYS: 104:36:56
 RUN-TIME was reduced by: 22.15%

COMPRESSOR USAGE FACTOR
 IntelliCon On-Days: 11%
 IntelliCon Off-Days: 14%

COOLING DEGREE-DAYS (FOR TEST PERIOD)
 IntelliCon ON-DAYS: 29.3 It was 6.9% Warmer on the On-Days.
 IntelliCon OFF-DAYS: 27.4
 Total Degree-Days: 56.7

USAGE PER DEGREE-DAY
 ON-DAYS: 2:46:52
 OFF-DAYS: 3:49:02

SOLAR LOAD COMPENSATION: (Lumens/Sq. Ft.)
 IntelliCon ON-DAYS: 344041
 IntelliCon OFF-DAYS: 335698 It was 2.49% Sunnier on the On-Days.

Individual Compressor Data

	ON-DAY	OFF-DAY
Chiller #1		
Comp 1 RT	1:32:38	3:42:17
Comp 2 RT	Broken	Broken
Chiller #2		
Comp 1 RT	20:42:00	27:19:04
Comp 2 RT	16:04:28	15:31:33
Chiller #3		
Comp 1 RT	20:46:40	28:00:40
Comp 2 RT	20:42:41	27:56:58
Chiller #4		
Comp 1 RT	1:17:58	1:57:33
Comp 2 RT	0:20:17	0:08:51

Adj. Savings = 22.15%

COMMENTS: Compressor # 2 in the #1 Chiller was out-of-service for the duration of the test. Cooling Degree-Day adjustments were not made for this report even though it was 6.9% warmer during the "On" Days. Since no adjustment was made, the savings results are slightly understated. Compressor utilization during the test period was less than normally expected.



90 Pratt Oval
 Glen Cove, NY 11542
 Phone: 516-676-0777
 Fax: 516-676-2640

Test Report

Report No. 12156-2

Date: 18/05/07

Customer:

China Huayang Technology and Trade Corporation
 Longji Building
 No. 67 Jinbao Street
 Dongcheng District
 Beijing, China, 8000

Test Site Location:

Guo Yi Hotel
 No. 1 Xicheng District Wenxing Dong
 Jie Beijing, China, 100044

Test Type: HEATING AIR CONDITIONING REFRIGERATION OTHER: _____
 Product Tested: HW LCH LCS CHW CHS AC CAC RU OTHER: _____

Type of Equipment:

Manufacturer: Hitachi
 Model: 755FSV2-F
 Capacity / SetPt: 7.5 hP / Ref. = 9 Deg.C., Freezer = -7 Deg. C.
 Fuel Type: Electric
 Application: Walk-in Refrigerator and Freezer
 Area Served: Walk-in Refrigerator and Freezer
 Misc.

Test Start Date: 05/03/07
 Test End Date: 05/10/07
 No. of Days in Test: 8

TOTAL COMPRESSOR RUN-TIME: in HRS. in MIN.
 IntelliCon ON-DAYS: 25:39:50
 IntelliCon OFF-DAYS: 28:55:15
 RUN-TIME was reduced by: 11.26%

COMPRESSOR USAGE FACTOR
 IntelliCon On-Days: 27%
 IntelliCon Off-Days: 30%

COOLING DEGREE-DAYS (FOR TEST PERIOD)
 IntelliCon ON-DAYS: 29.3 It was 6.9% Warmer on the On-Days.
 IntelliCon OFF-DAYS: 27.4
 Total Degree-Days: 56.7

USAGE PER DEGREE-DAY
 ON-DAYS: 0:52:35
 OFF-DAYS: 1:03:19

SOLAR LOAD COMPENSATION: (Lumens/Sq. Ft.)
 IntelliCon ON-DAYS: 344041
 IntelliCon OFF-DAYS: 335698 It was 2.49% Sunnier on the On-Days.

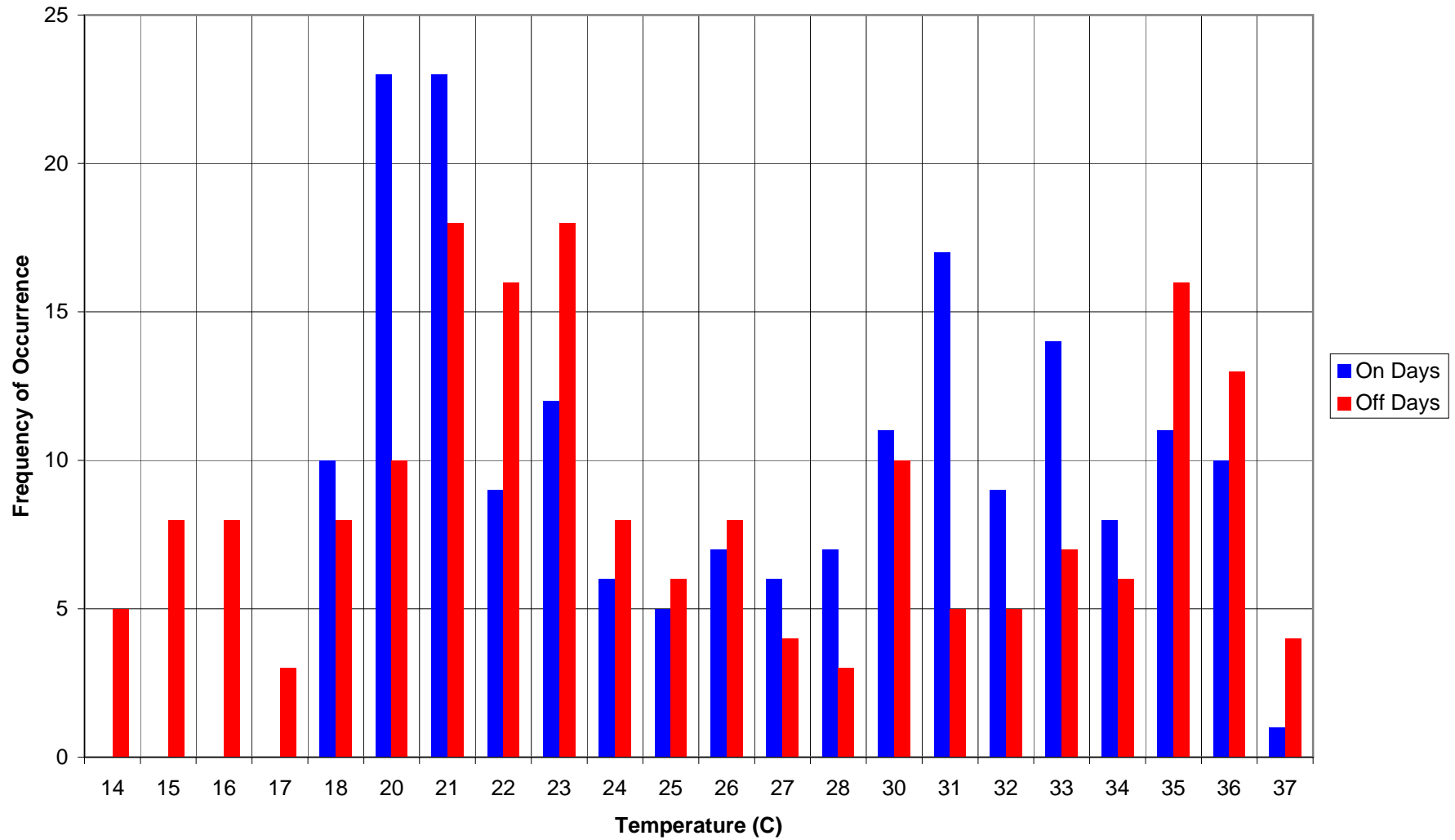
Individual Liquid Line Runtime Data

	ON-DAY	OFF-DAY
Freezer RT	21:33:07	23:59:05
Refrig RT	18:58:00	22:05:09

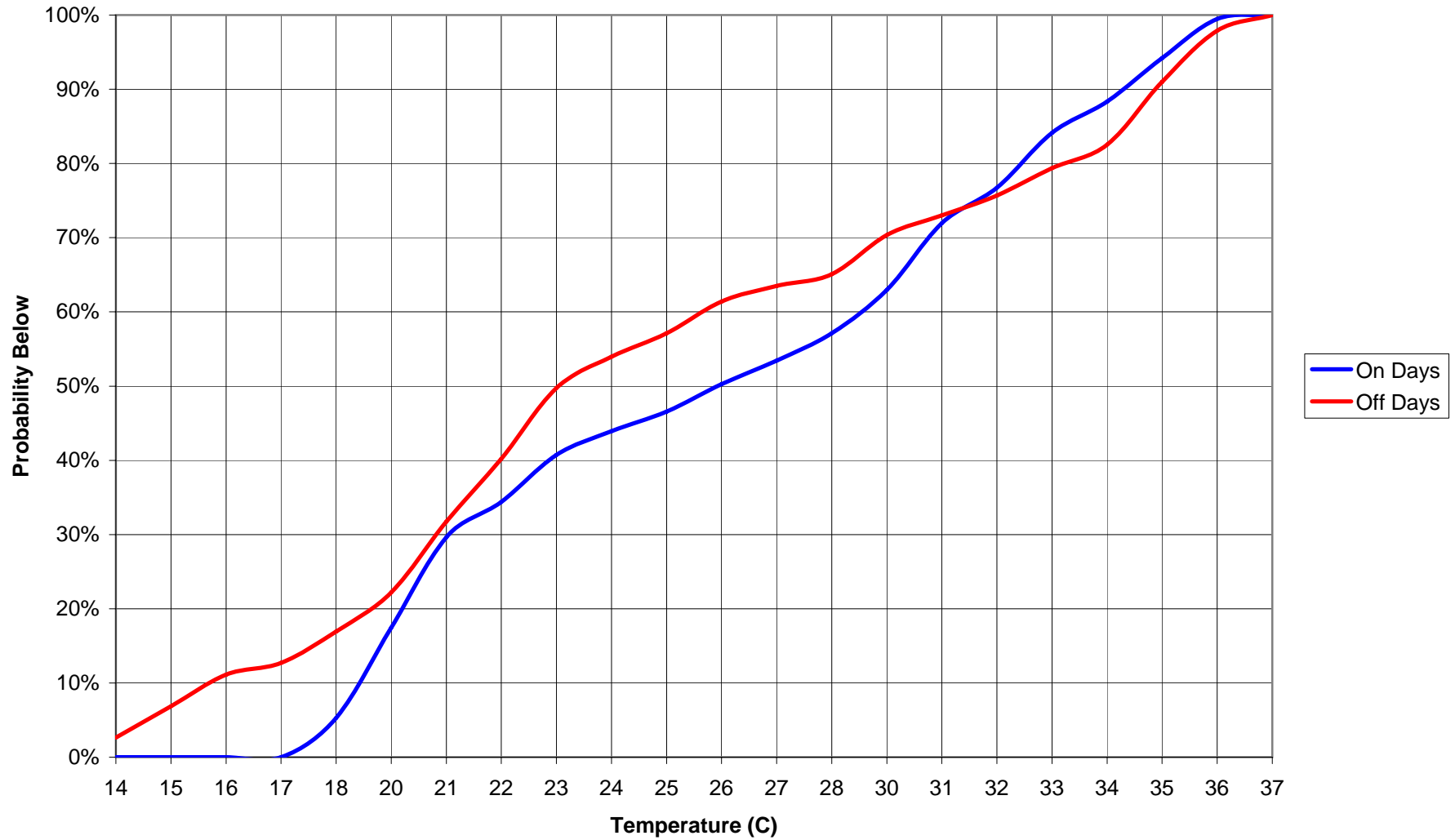
Adj. Savings = 11.26%

COMMENTS: Degree-Day data is shown for informational purposes only. Degree-Day adjustments are not needed for this type of application, since the controlled spaces are not subject to ambient conditions.

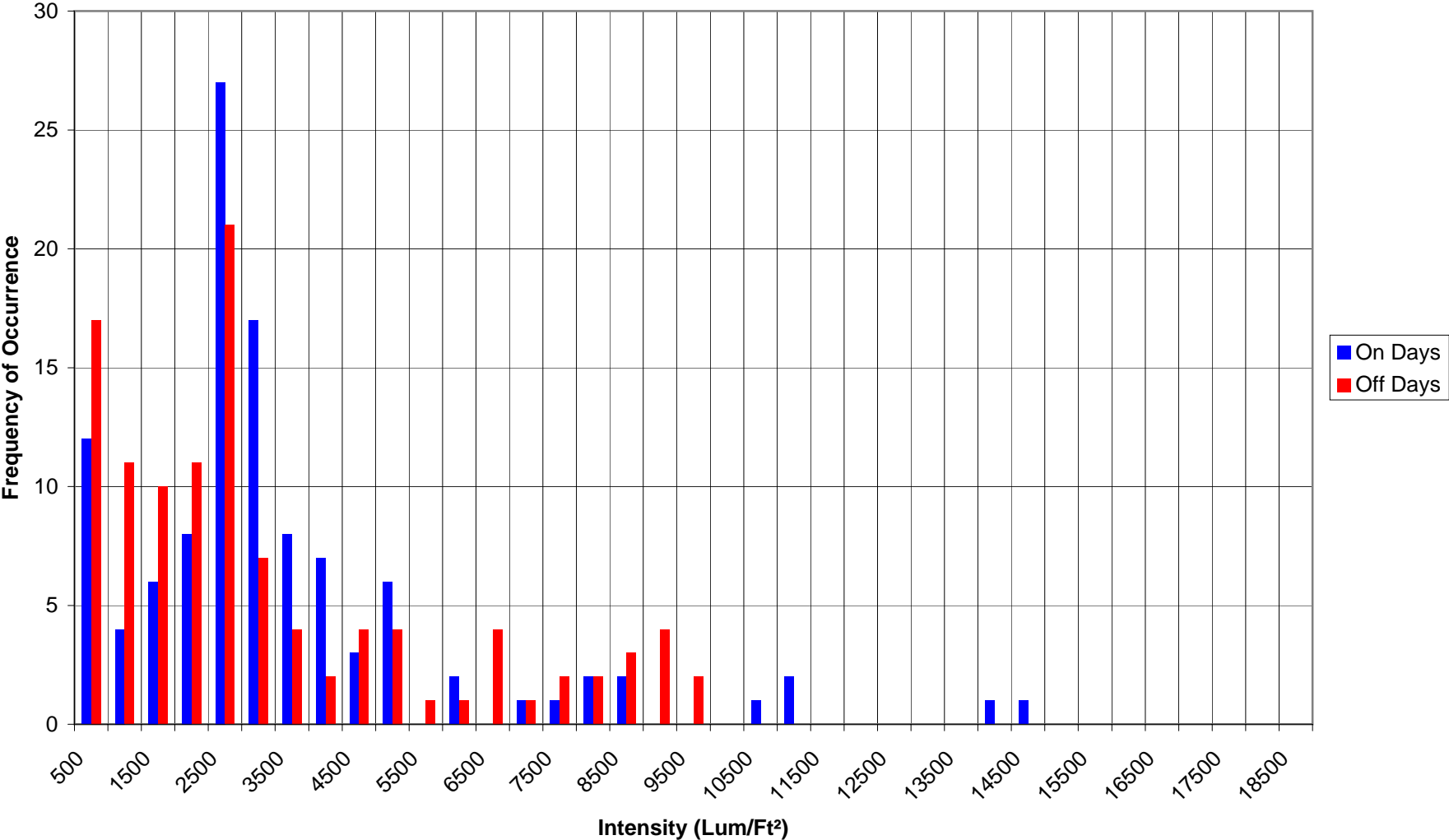
Gou Yi Hotel Refrigeration / AC Pilot Program
Outside Air Temperature Histogram (03/05/07--10/05/07)



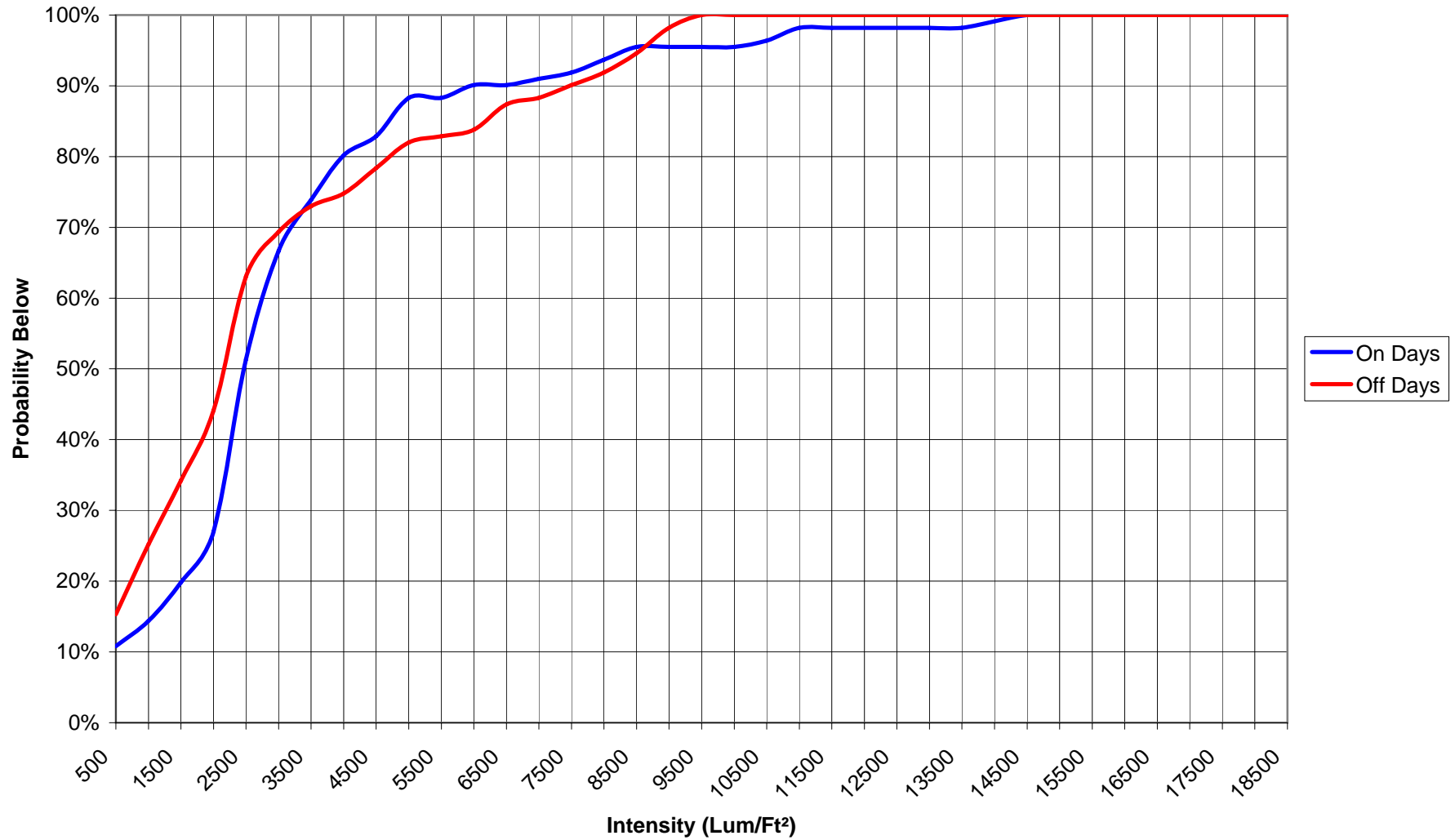
**Gou Yi Hotel Refrigeration / AC Pilot Program
Outside Air Temperature Probabilities (03/05/07--10/05/07)**



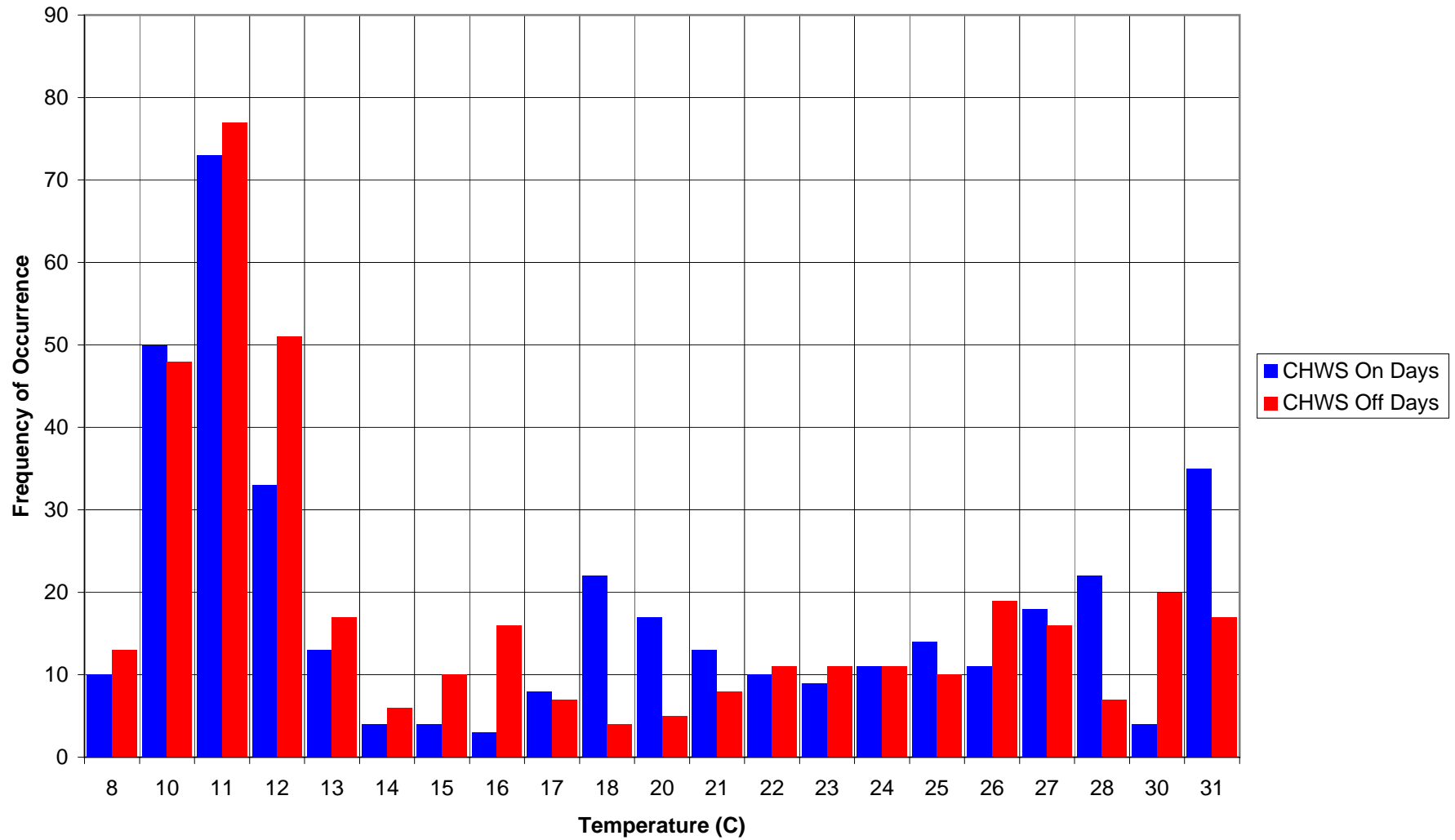
Gou Yi Hotel Refrigeration / AC Pilot Program
Solar Load Histogram 6:00 am - 8:00 pm (03/05/07--10/05/07)



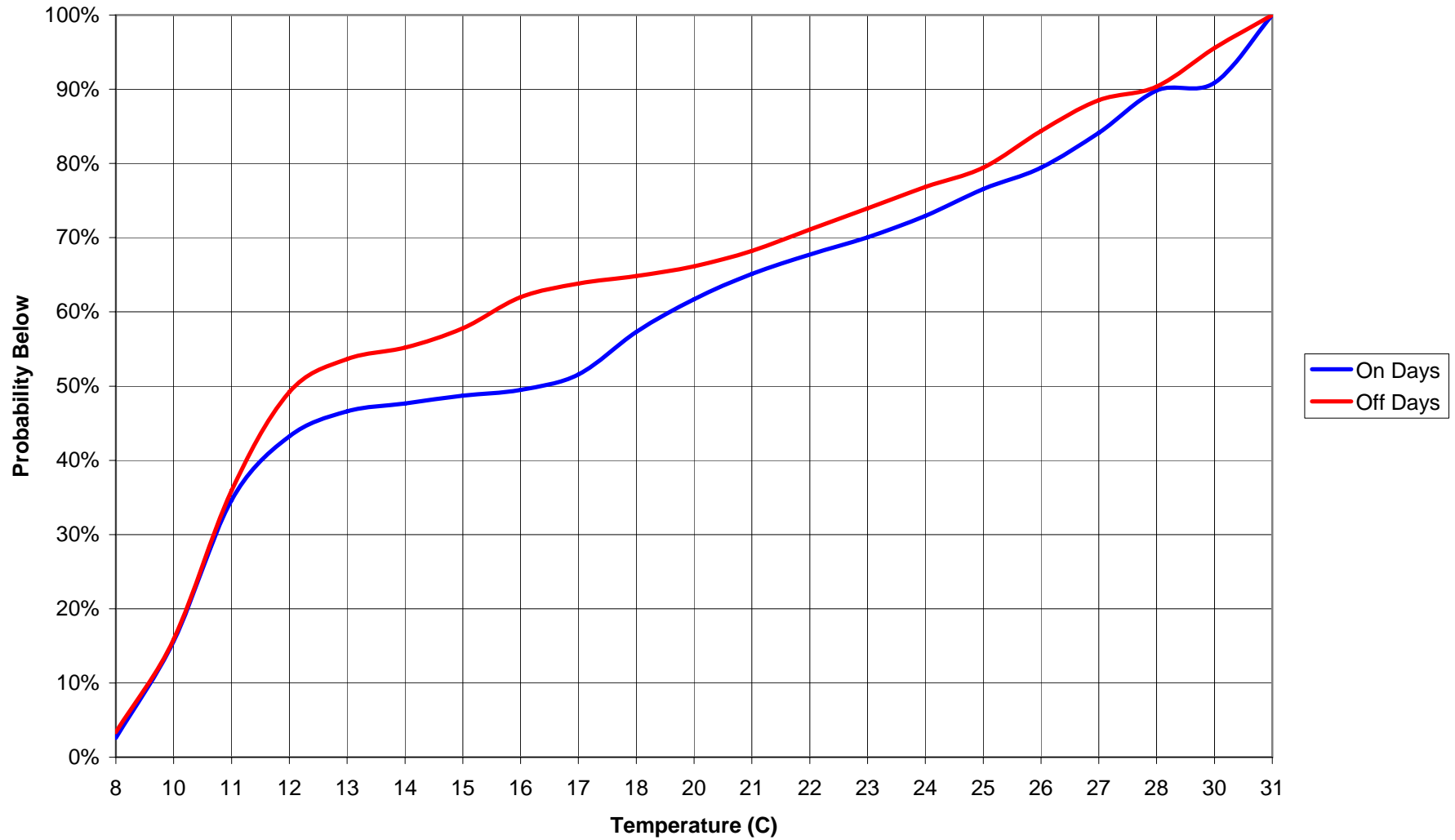
Gou Yi Hotel Refrigeration / AC Pilot Program
Solar Load Probabilities 6:00 am - 8:00 pm (03/05/07--10/05/07)



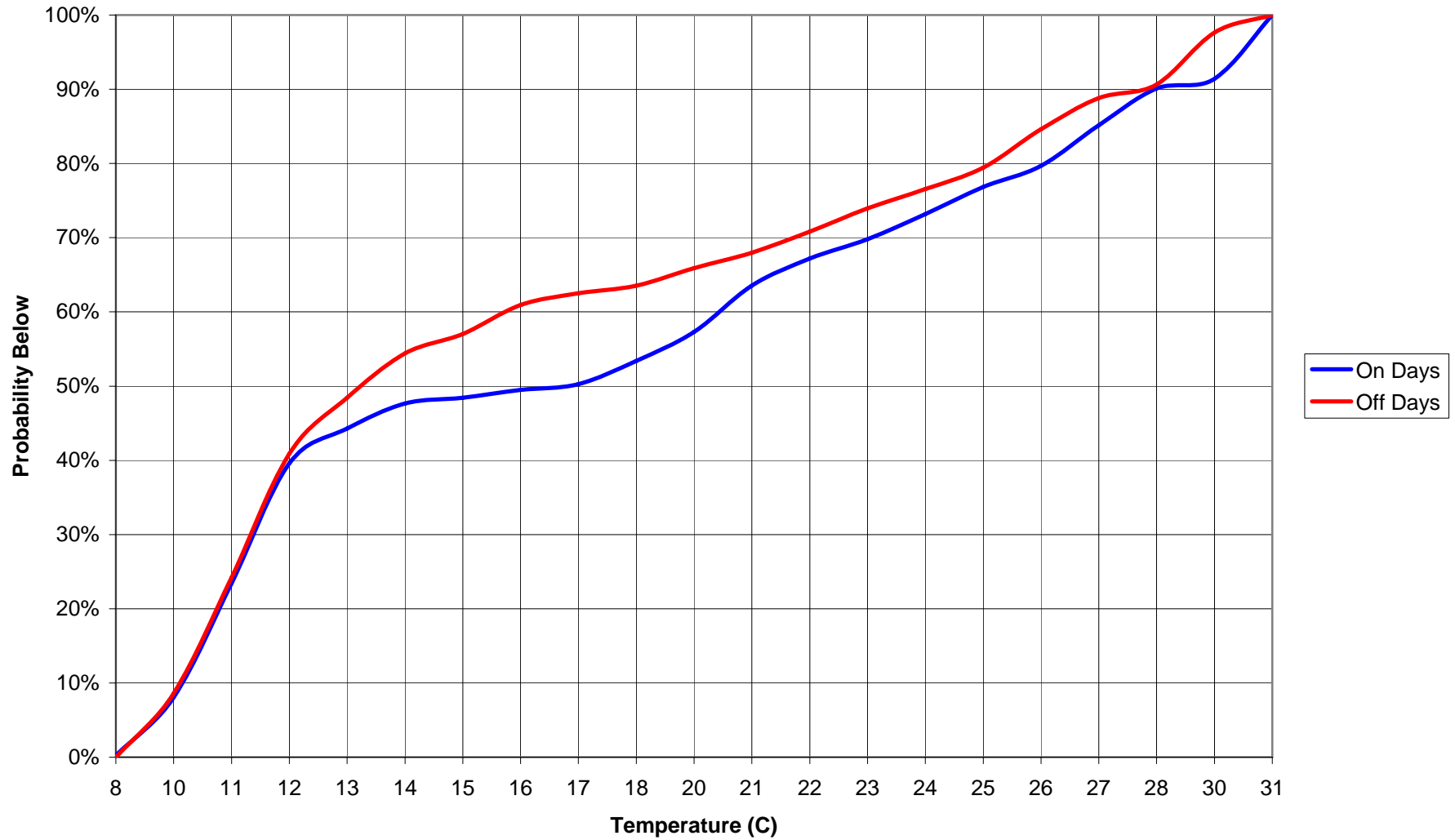
Gou Yi Hotel Refrigeration / AC Pilot Program
CHILLED WATER SUPPLY Temperature Histogram (03/05/07--10/05/07)



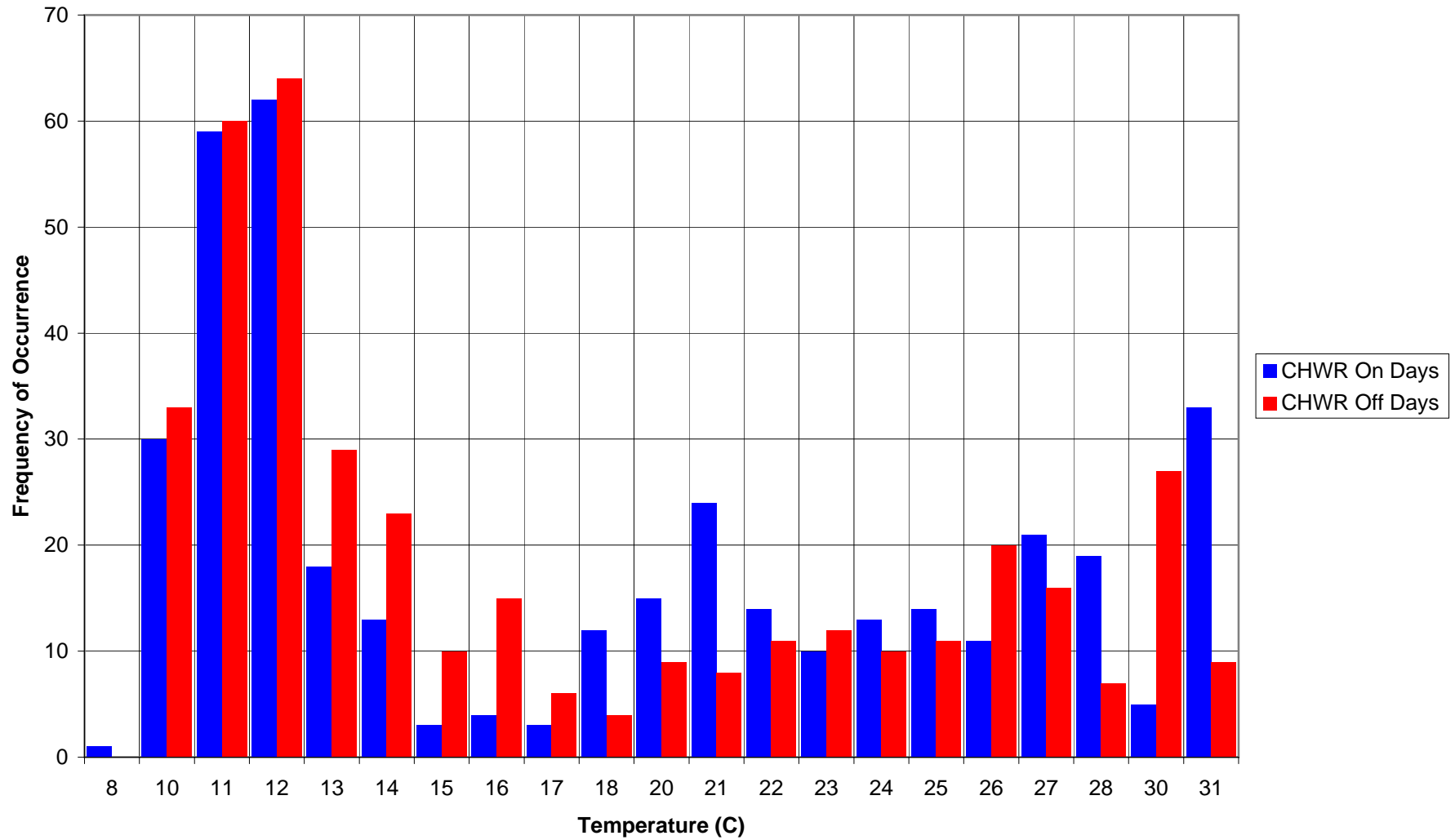
**Gou Yi Hotel Refrigeration / AC Pilot Program
CHILLED WATER SUPPLY Temperature Probabilities (03/05/07--10/03/07)**



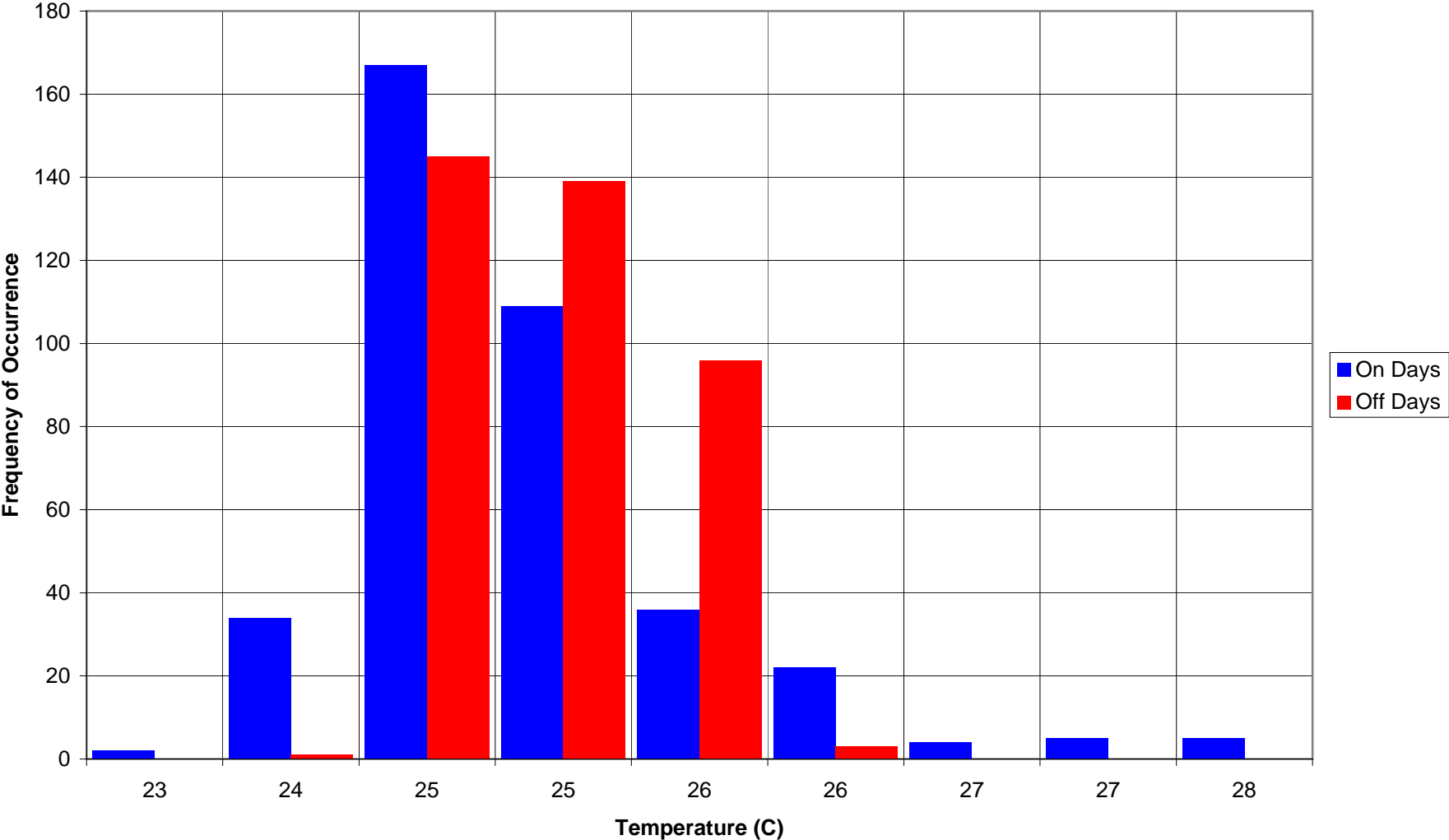
Gou Yi Hotel Refrigeration / AC Pilot Program
CHILLED WATER RETURN Temperature Probabilities (03/05/07--10/05/07)



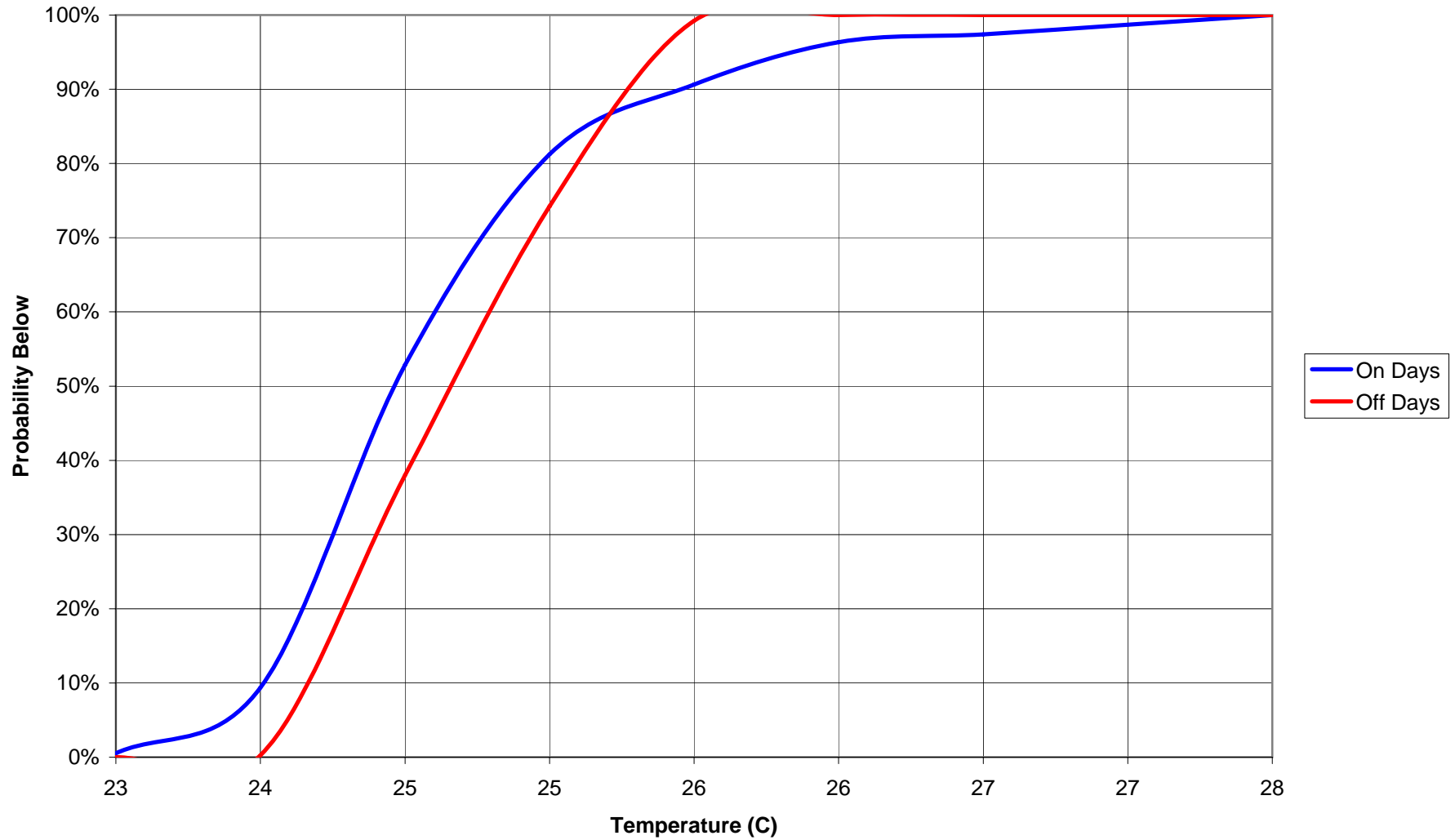
**Gou Yi Hotel Refrigeration / AC Pilot Program
CHILLED WATER RETURN Temperature Histogram (03/05/07--10/05/07)**



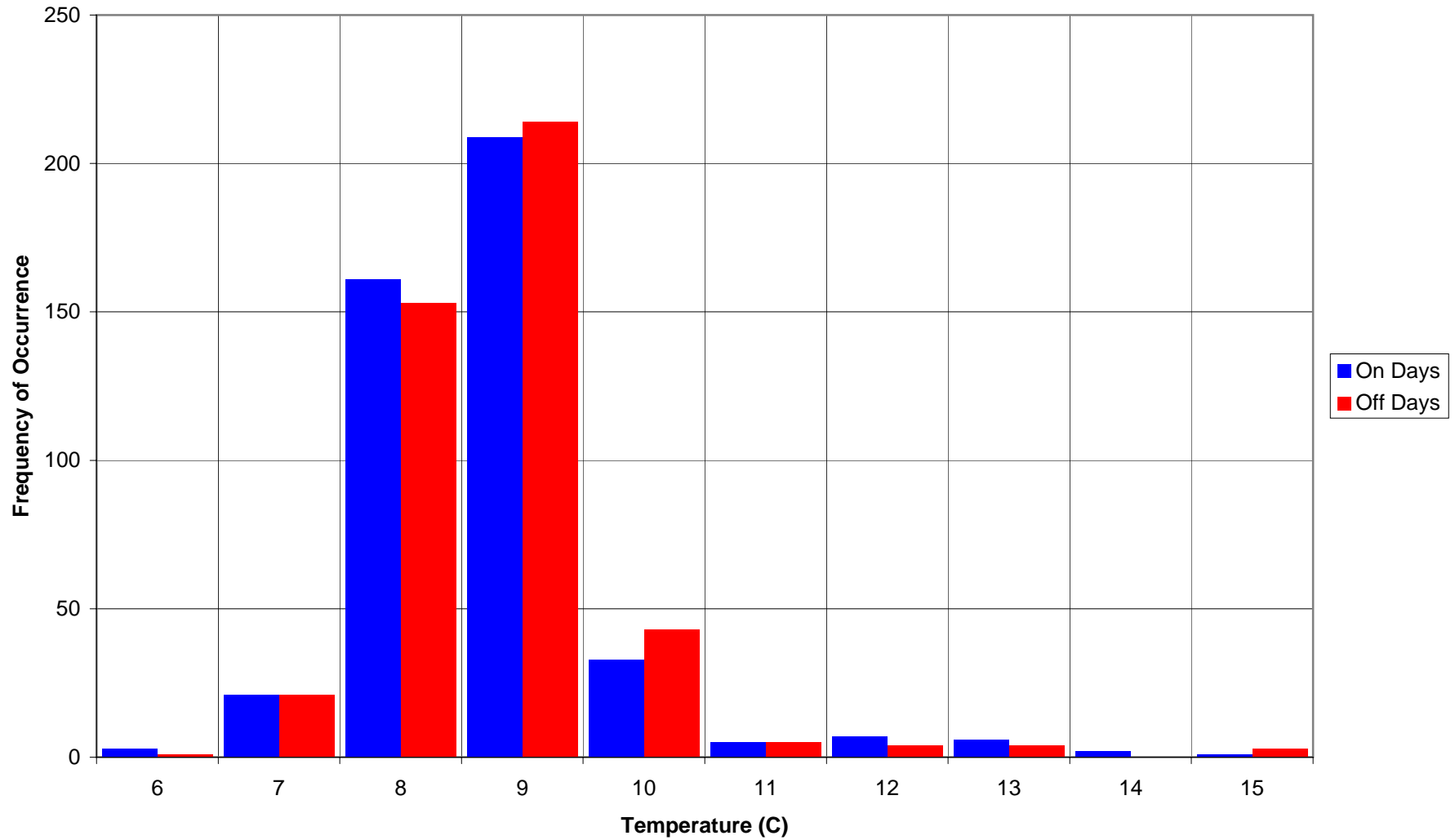
**Gou Yi Hotel Refrigeration / AC Pilot Program
Restaurant Area Temperature Histogram (03/05/07--10/05/07)**



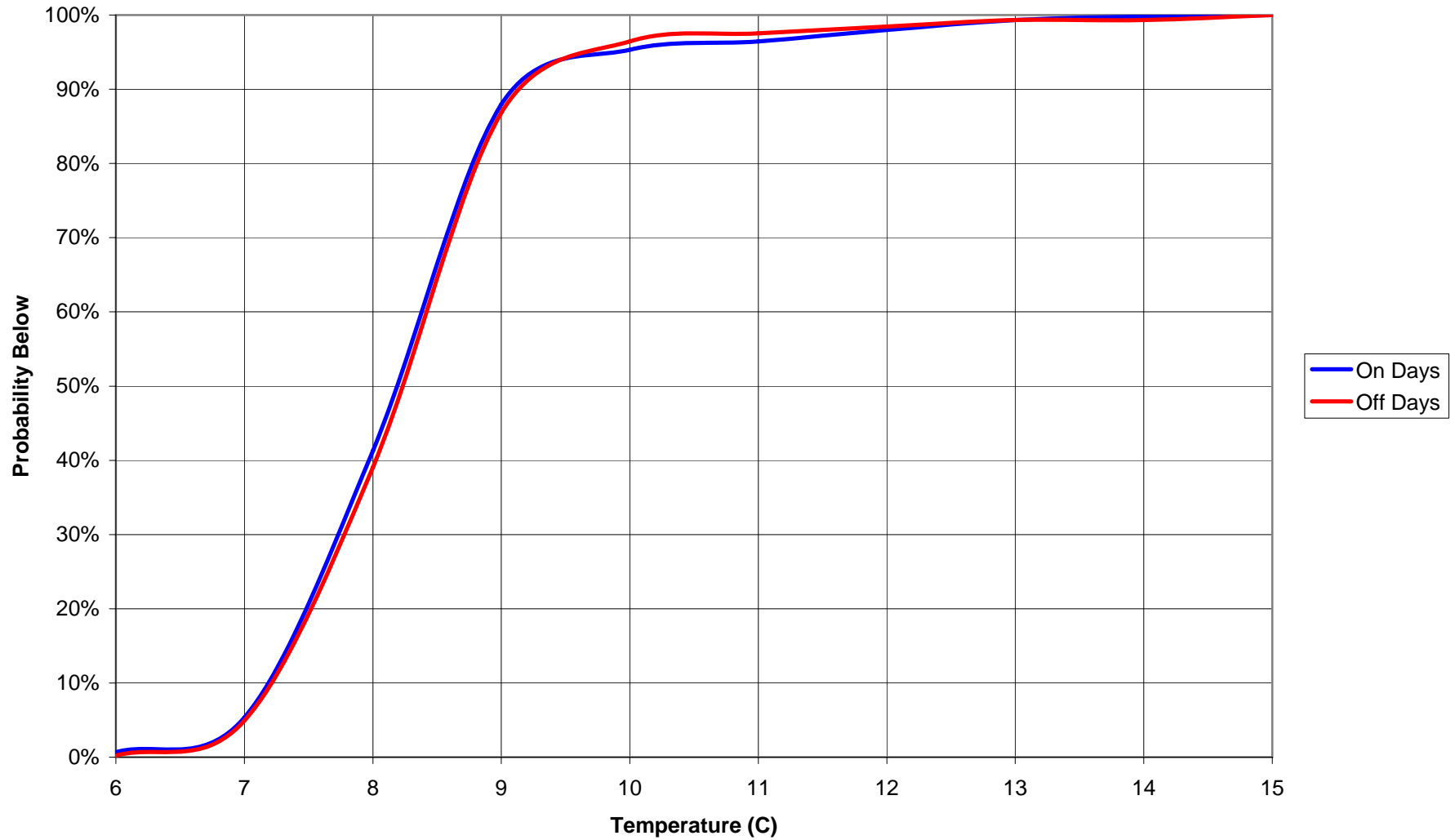
**Gou Yi Hotel Refrigeration / AC Pilot Program
Restaurant Area Temperature Probabilities (03/05/07--10/03/07)**



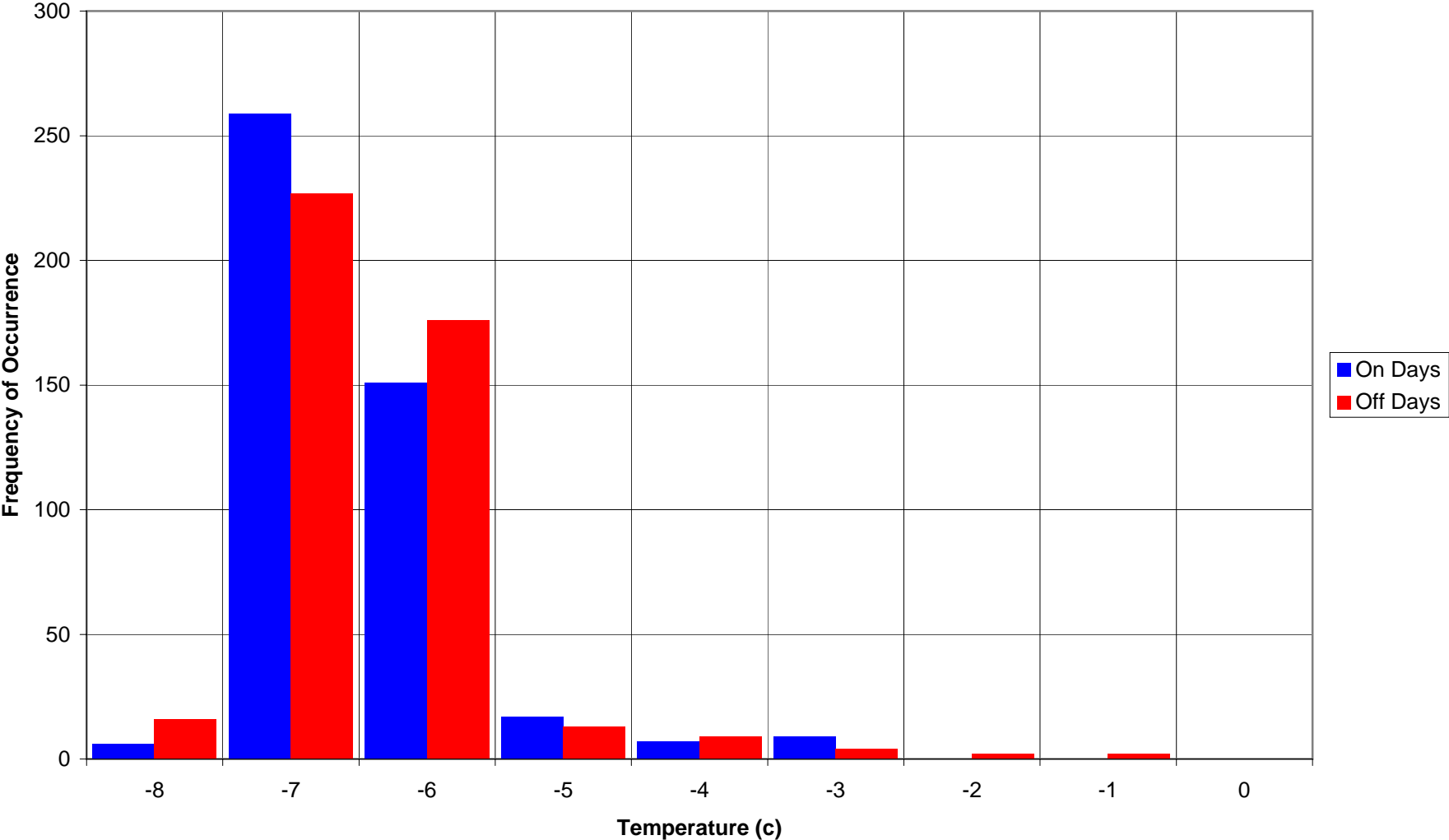
Gou Yi Hotel Refrigeration / AC Pilot Program
Walk-in Refrigerator Temperature Histogram (02/05/07--11/05/07)



Gou Yi Hotel Refrigeration / AC Pilot Program
Walk-in Refrigerator Temperature Probabilities (02/05/07--11/03/07)



**Gou Yi Hotel Refrigeration / AC Pilot Program
Walk-in Freezer Temperature Histogram (02/05/07--11/05/07)**



**Gou Yi Hotel Refrigeration / AC Pilot Program
Walk-in Freezer
Temperature Probabilities (02/05/07--11/03/07)**

