



Report No. 708001

Date: 8/30/07

## INTELLIDYNE CANADA

# Electricity Consumption Reduction Pilot Program

### TEST RESULTS FOR: ROOF TOP PACKAGED AIR CONDITIONING

Located at:

KAWARTHA DAIRY  
302 TORONTO STREET S.  
UXBRIDGE, ONTARIO  
CANADA

A Confidential Report  
*Prepared by*  
Intellidyne LLC



90 Pratt Oval  
 Glen Cove, NY 11542  
 Phone: 516-676-0777  
 Fax: 516-676-2640

# Test Report

Report No. 708001

Date: 08/30/07

**Customer:**

Intellidyne Canada  
 1519 Rawlings Dr.  
 Pickering, Ontario  
 Canada L1V5A6

**Test Site Location:**

Kawartha Dairy  
 302 Toronto Street S.  
 Uxbridge, Ontario  
 Canada

Test Type:  HEATING  AIR CONDITIONING  REFRIGERATION  OTHER: \_\_\_\_\_  
 Product Tested:  HW  LCH  LCS  CHW  CHS  AC  CAC  RU  OTHER: \_\_\_\_\_

**Type of Equipment:**

Manufacturer: Lennox  
 Model: GCS16-072-160-1J  
 Capacity / SetPt: 6 Ton  
 Fuel Type: Electricity  
 Application: Space Cooling  
 Area Served:  
 Misc. condenser Mounted on Rooftop

Test Start Date: 06/26/07  
 Test End Date: 07/13/07  
 No. of Days in Test: 18

**COMPRESSOR RUN-TIME:**  in HRS.  in MIN.  
 IntelliCon ON-DAYS: 61.06 Hr  
 IntelliCon OFF-DAYS: 68.06 Hr  
 RUN-TIME was reduced by: 10.28%

**COMPRESSOR USAGE FACTOR**  
 IntelliCon On-Days: 28%  
 IntelliCon Off-Days: 32%

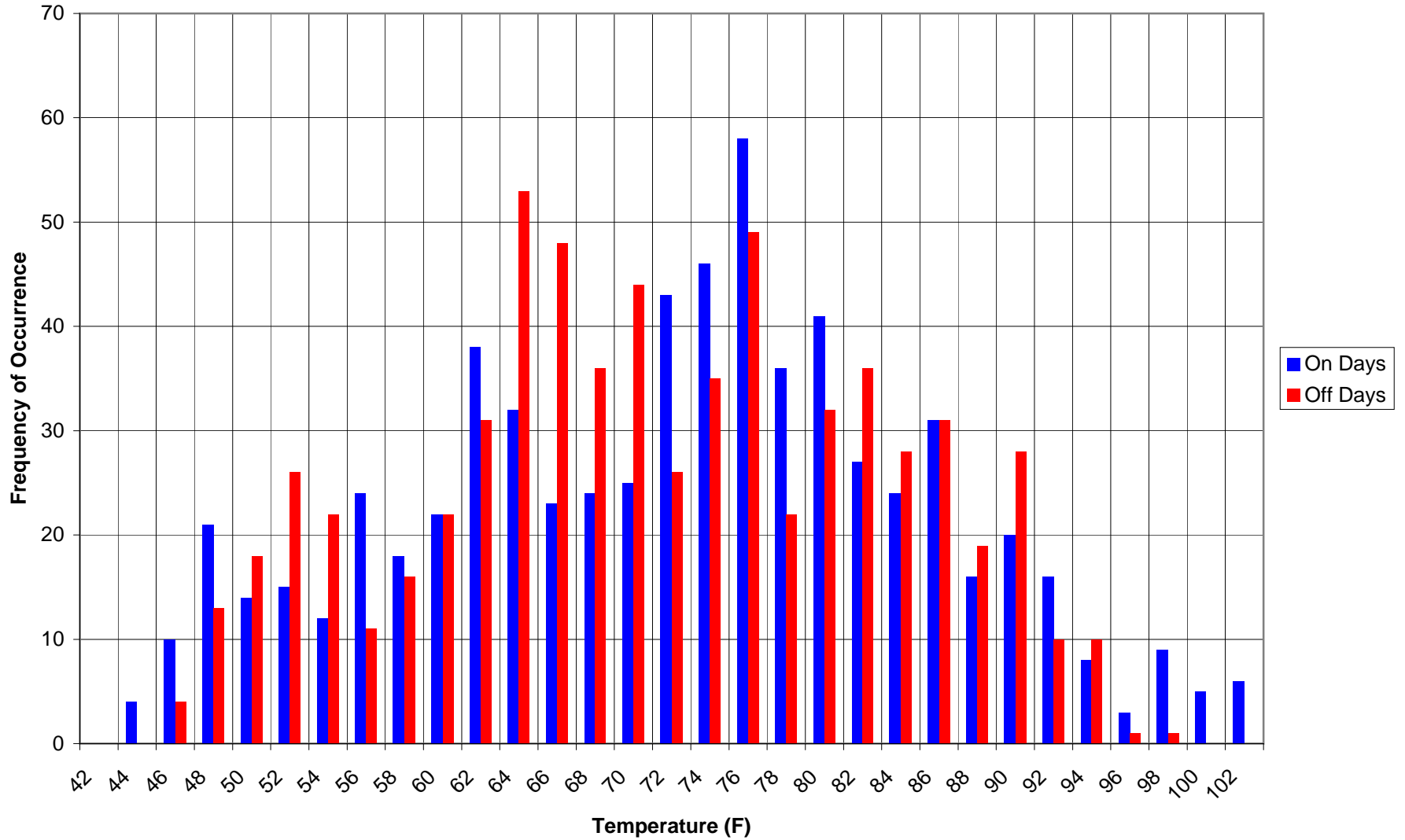
**COOLING DEGREE-DAYS (FOR TEST PERIOD)**  
 IntelliCon ON-DAYS: 64 It was 16.3% Warmer on the On-Days.  
 IntelliCon OFF-DAYS: 55  
 Total Degree-Days: 119

**USAGE PER DEGREE-DAY**  
 ON-DAYS: .96 Hr  
 OFF-DAYS: 1.24 Hr

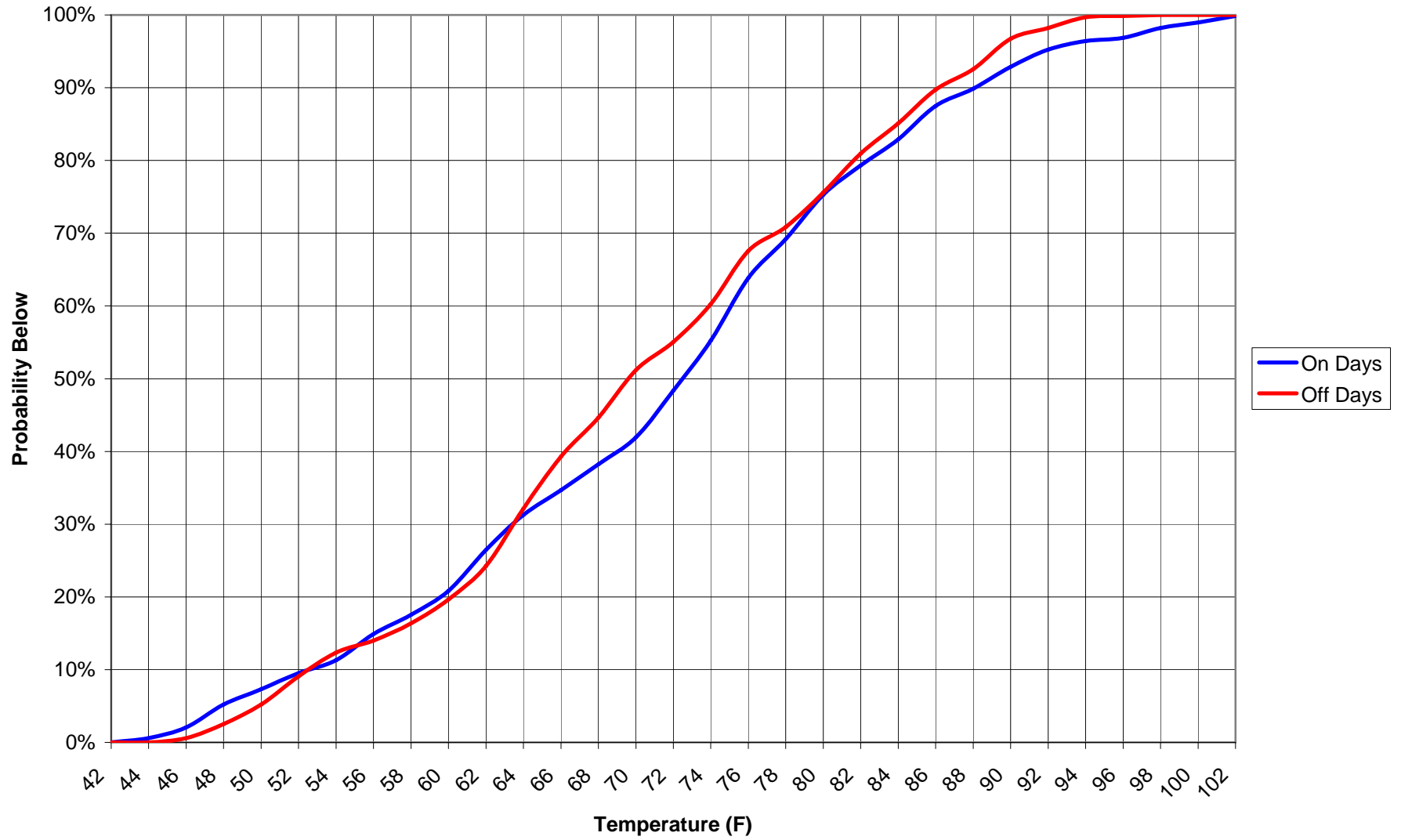
**Savings = 22.6%**

COMMENTS: During the Pilot Demonstration period there was a 16.3 % difference in the measured outdoor air temperature between the "ON" and "Off" days. The total "Cooling Degree" days for "ON" days was 64 and the total "Cooling Degree" days for the "Off" days was 55. Because of this significant difference in cooling demand the run time was converted to run time hours per cooling degree day. This comparison shows an adjusted run time savings of 22.6%. There was also no significant difference in the measured space temperatures between the "ON" and "OFF" days.

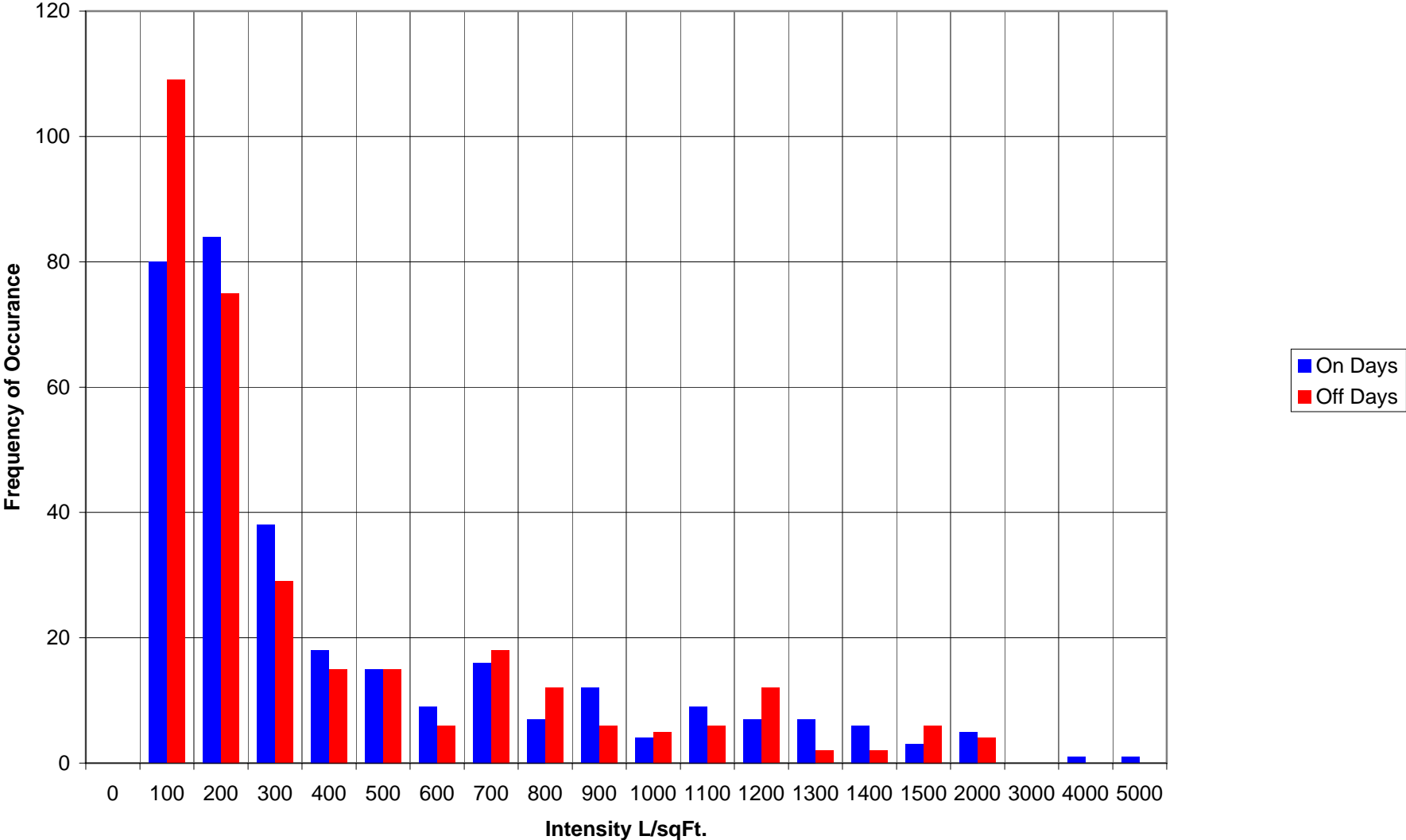
### Outside Air Temp Histogram



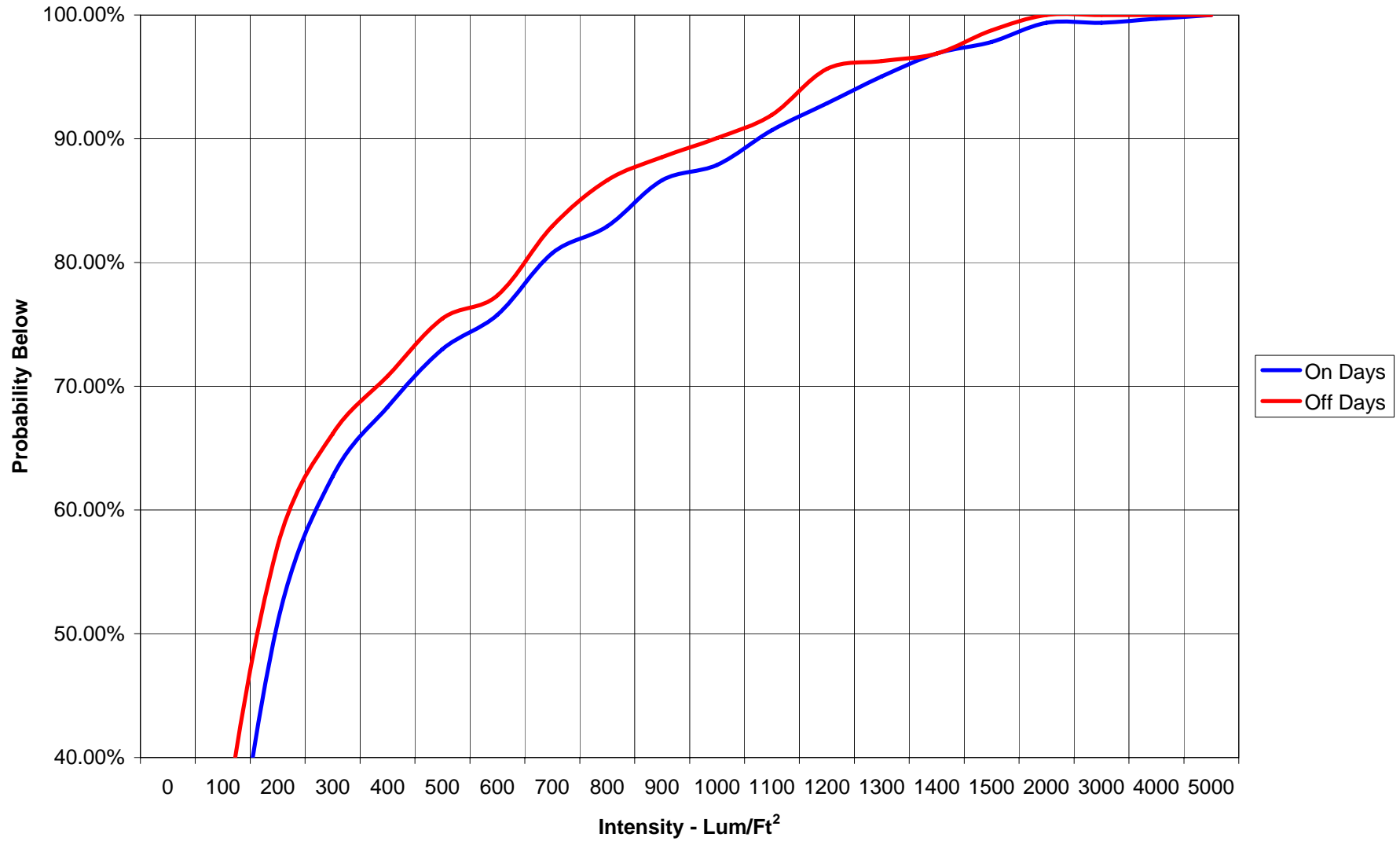
### OAT Temperature Probabilities



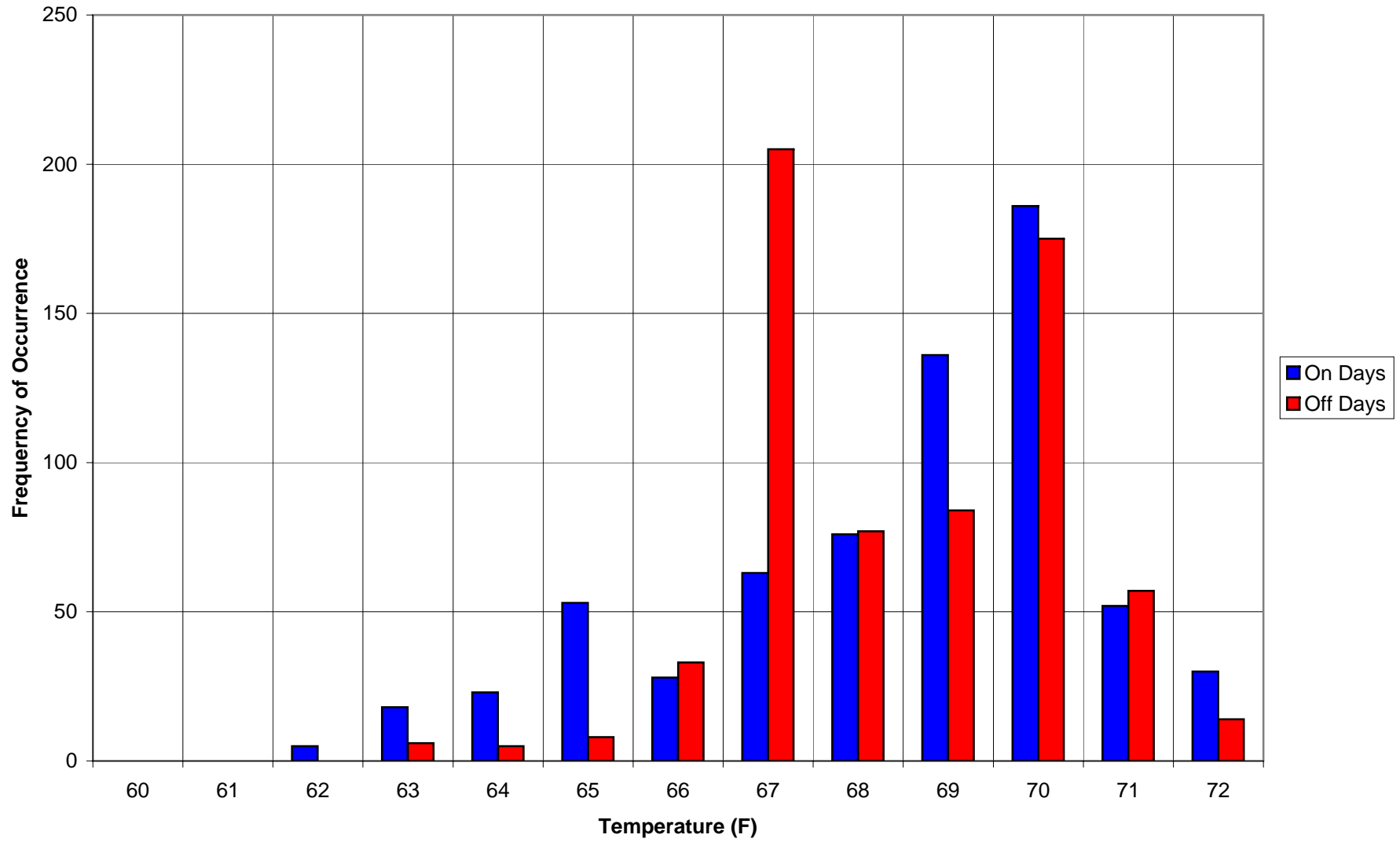
### Solar Influence Histogram



### Solar Influence Probabilities



### Temperature Histogram



### Solar Influence Probabilities

