



Report No. 703001

Date: 04/01/07

## INTELLIDYNE CANADA

# Fuel Consumption Reduction Pilot Program

## TEST RESULTS FOR: BUILDING SPACE HEATING

Located at:

OMINI-CAMPEAU BUILDING  
6501 CAMPEAU DRIVE  
KANATA, ONTARIO  
CANADA K2K3E9

A Confidential Report  
*Prepared by*  
Intellidyne LLC



90 Pratt Oval  
 Glen Cove, NY 11542  
 Phone: 516-676-0777  
 Fax: 516-676-2640

# Test Report

Report No. 703001

Date: 04/01/07

**Customer:**

Intellidyne Canada  
 1519 Rawlings Dr.  
 Pickering, Ontario  
 Canada L1V5A6

**Test Site Location:**

Campeau Building  
 6501 Campeau Dr  
 Kanata, Ontario  
 Canada K2K3E9

Test Type:  HEATING     AIR CONDITIONING     REFRIGERATION     OTHER: \_\_\_\_\_  
 Product Tested:  HW     LCH     LCS     CHW     CHS     AC     CAC     RU     OTHER: \_\_\_\_\_

**Type of Equipment:**

Manufacturer: Buderus  
 Model: G515-11 (2 boilers)  
 Capacity / SetPt: 1881000 / Set pt. 170  
 Fuel Type: Natural Gas  
 Application: Space Heating  
 Area Served: Office Space  
 Misc. \_\_\_\_\_

Test Start Date: 12/31/06  
 Test End Date: 01/22/07  
 No. of Days in Test: 22

**BURNER RUN-TIME:**

in HRS.     in MIN.

IntelliCon ON-DAYS: 79.42 Hr

IntelliCon OFF-DAYS: 91.34 Hr

RUN-TIME was reduced by: 13.05%

**BURNER USAGE FACTOR:**

IntelliCon On-Days: 30%

IntelliCon Off-Days: 35%

**USAGE PER DEGREE-DAY**

ON-DAYS: N/A

OFF-DAYS: N/A

**BURNER CYCLING REDUCTION:**

IntelliCon ON-DAYS: 1661

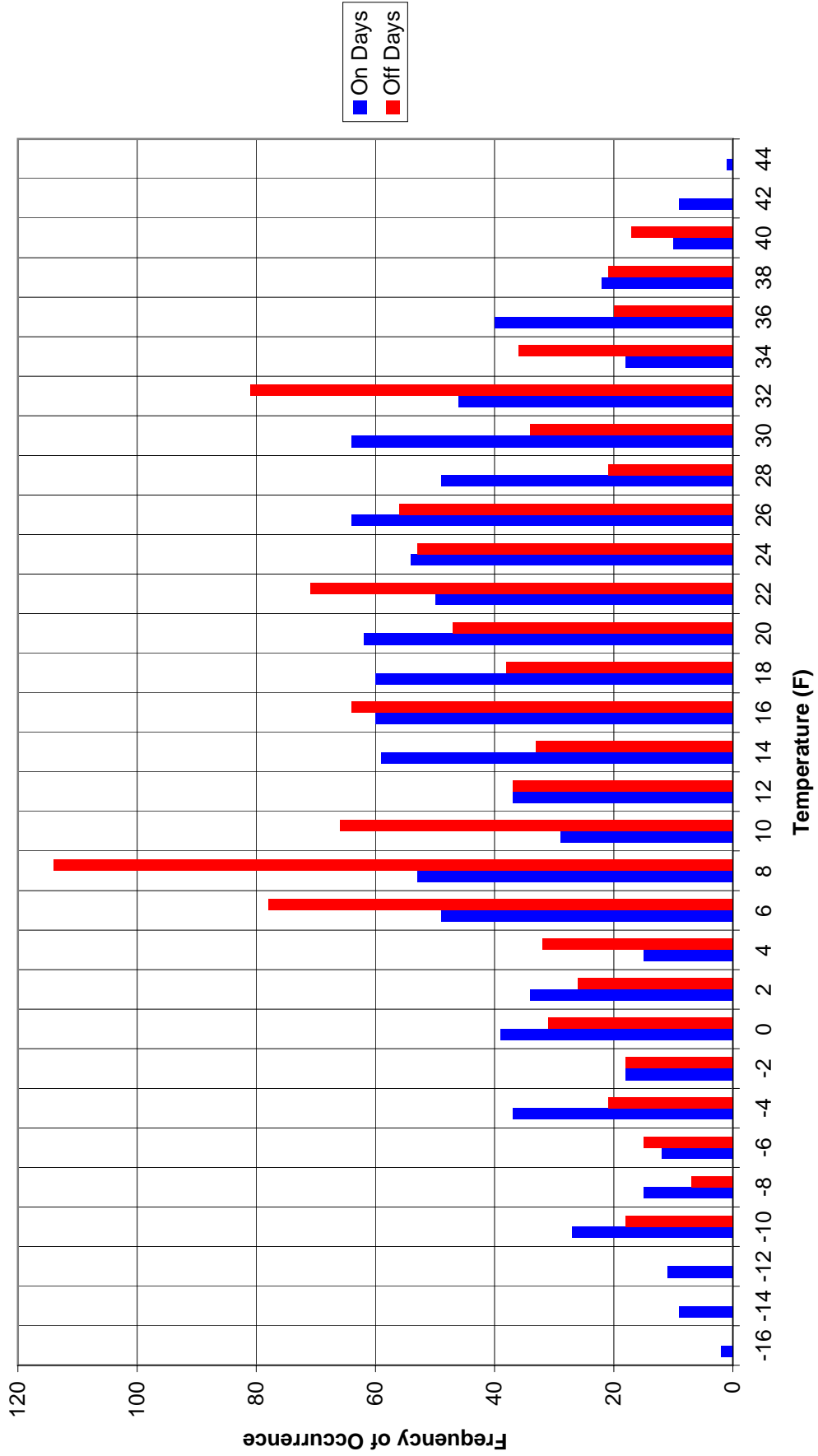
IntelliCon OFF-DAYS: 2277

Cycling was reduced by: 27.1%

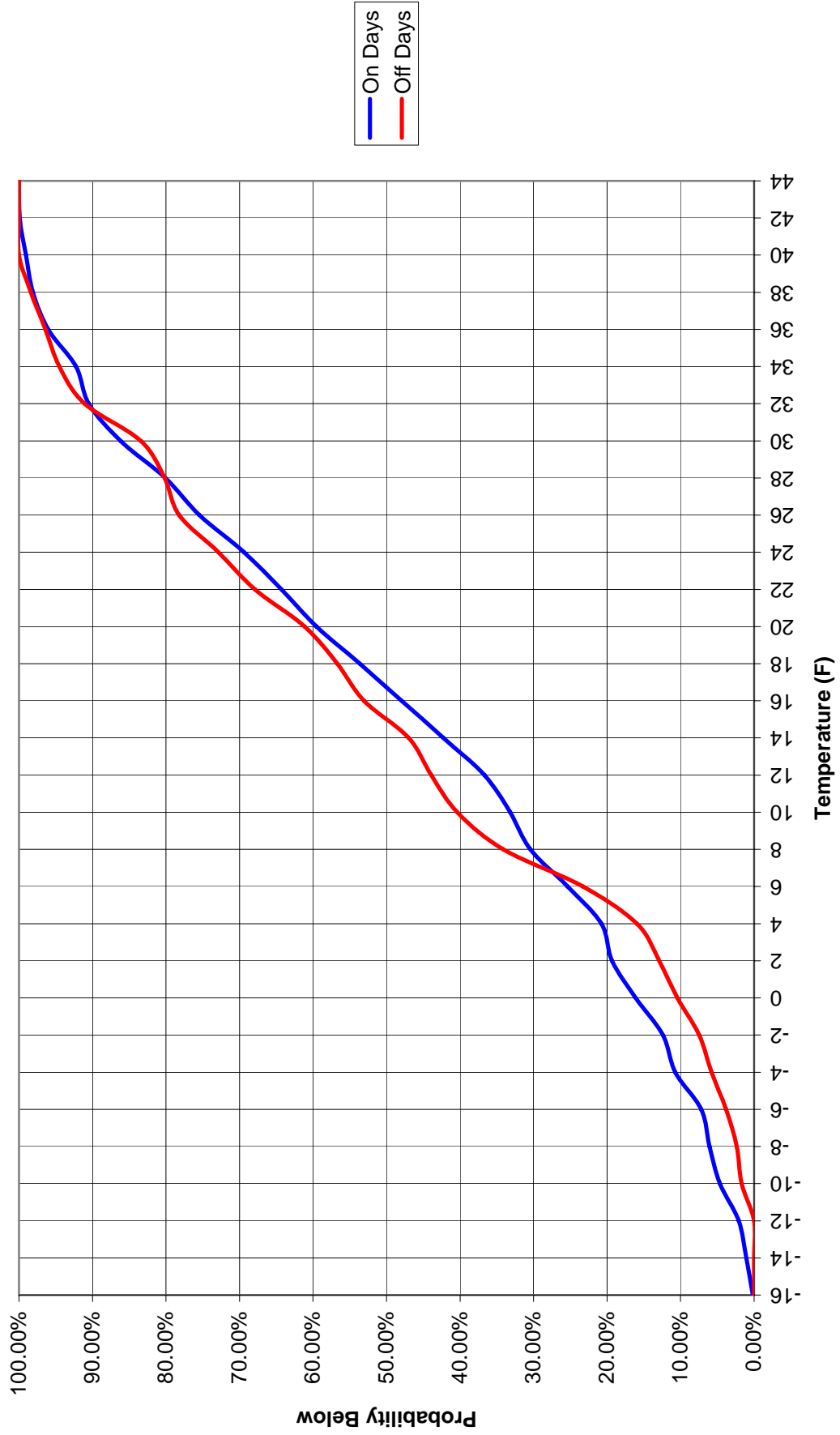
**Savings = 13.1%**

COMMENTS: During the test period no burner run time was recorded for Boiler #1. Significant reductions in burner run time and burner cycling were achieved on Boiler 2 for those days when the IntelliCon LCH controls were in the control circuit.

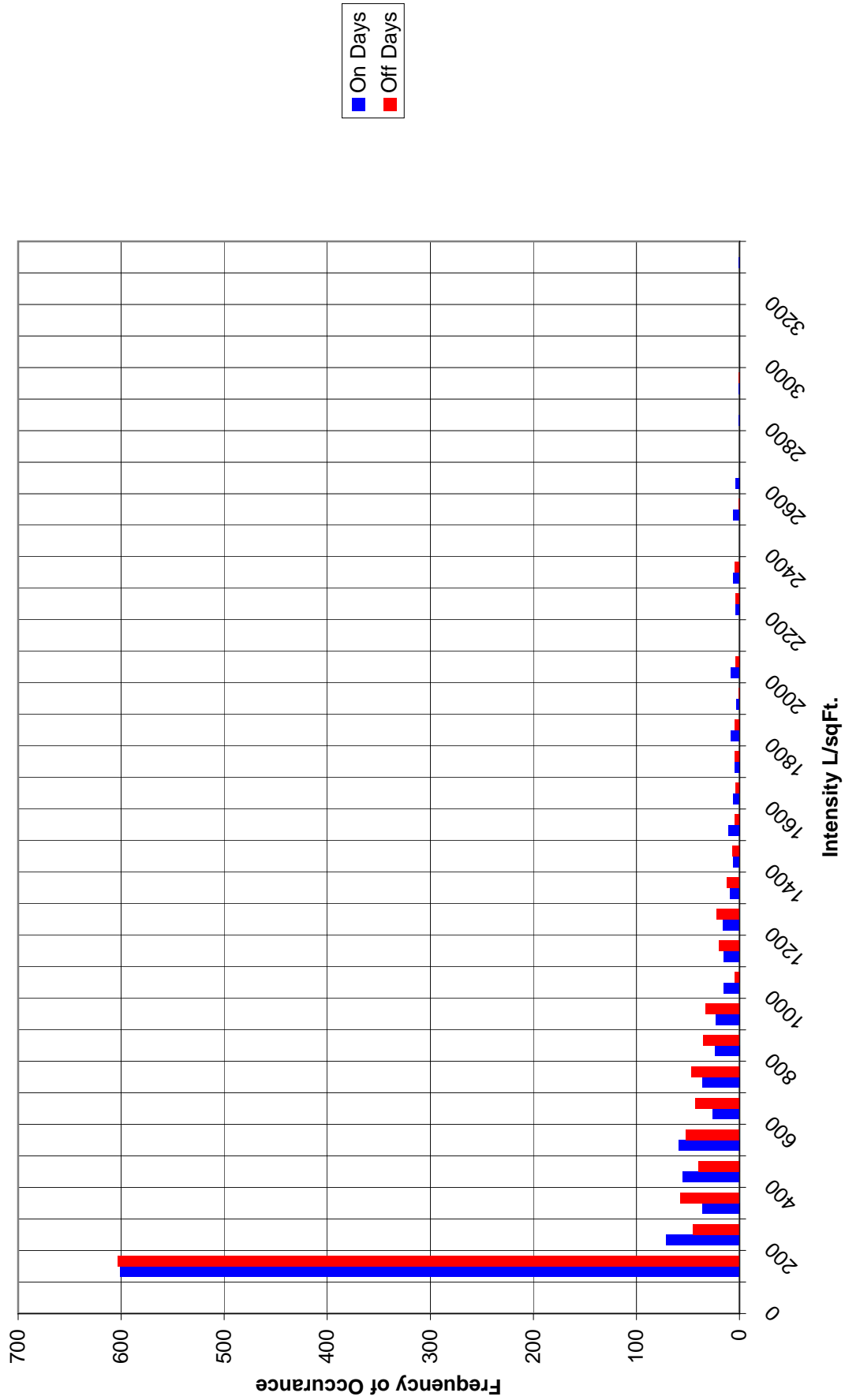
Omni Campeau  
Outside Air Temp Histogram (12/21/06 - 1/21/07)



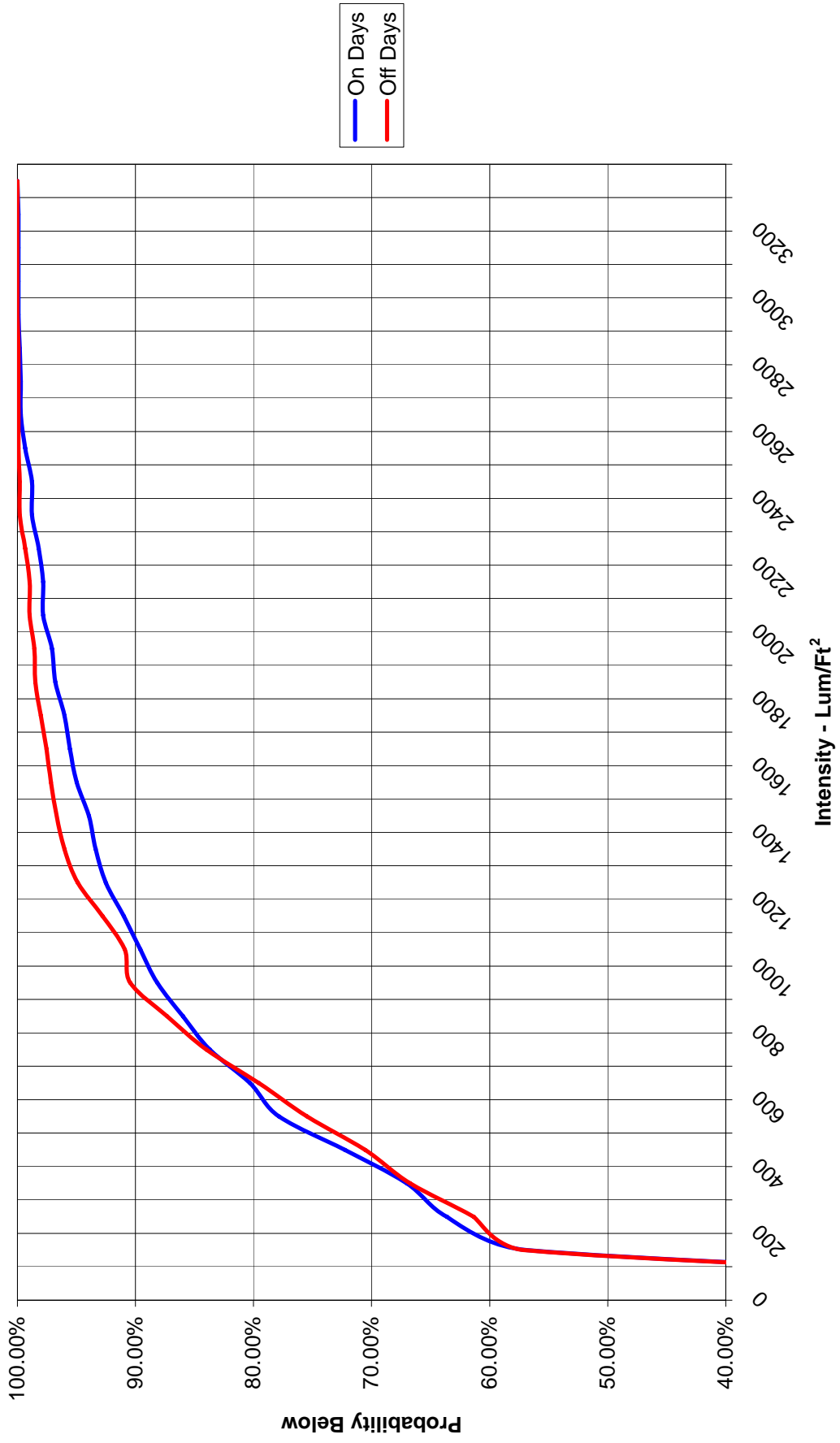
Omni Campeau  
OAT Temperature Probabilities (12/21/06 - 1/21/07)



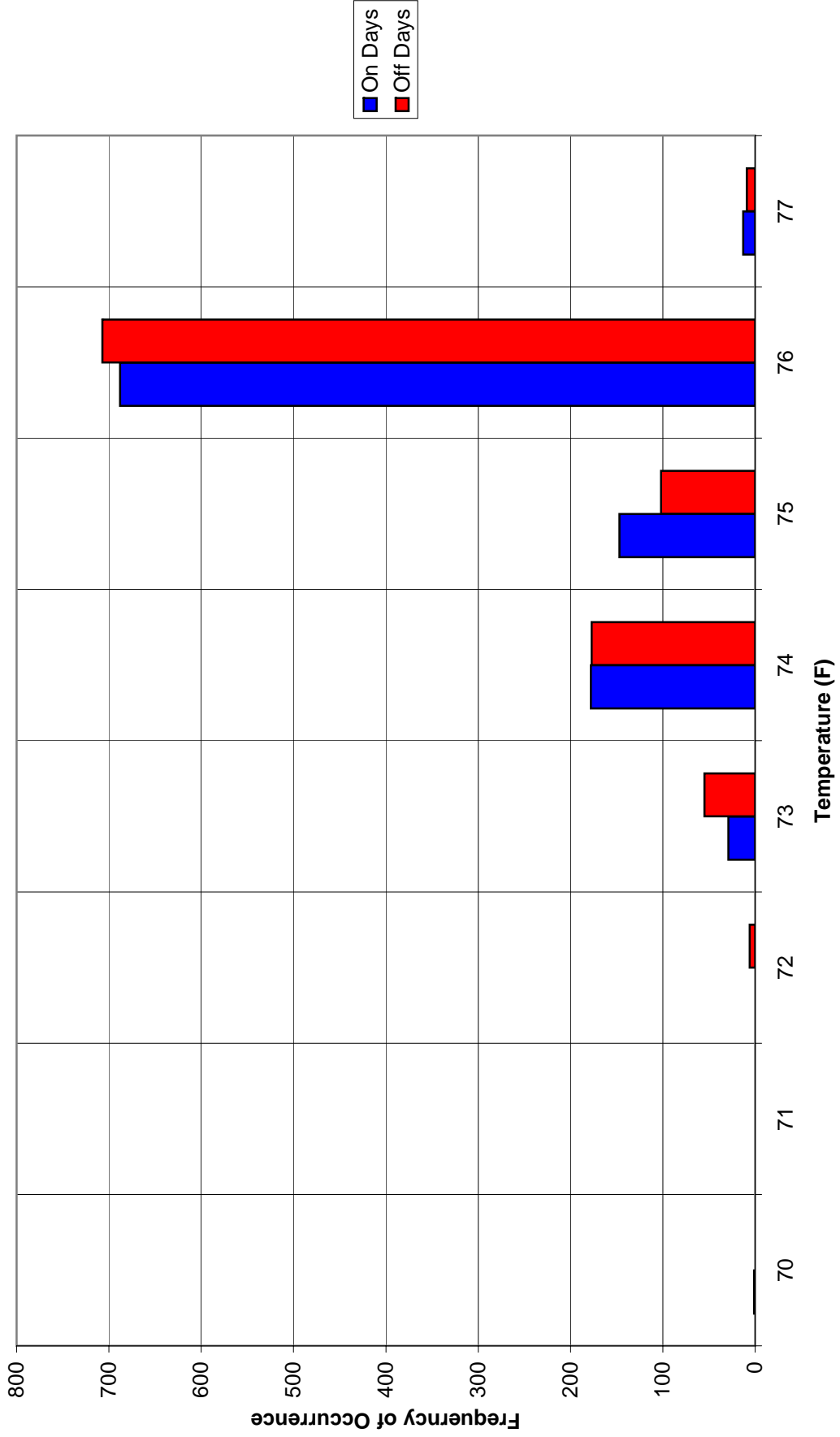
Omni Campeau  
Solar Influence Histogram (12/21/06 - 1/21/07)



Omni Campeau  
Solar Influence Probabilities (12/21/06 - 1/21/07)



Omni Campeau  
Space Temperature Histogram (12/21/06 - 1/21/07)



**Omni Campeau  
Space Temperature Probabilities (12/21/06 - 1/21/07)**

