



303 Sunnyside Blvd., Suite 75
 Plainview, NY 11803-1508
 Phone: (516) 676-0777
 Fax: (516) 676-2640

Test Report

Report No. 12173

Date: 10/06/12

Customer:

Redutec ApS
 Attrupvej 4 • Strøby
 8550 Ryomgård

Test Site Location:

Steinfeld School
 Mayor Oetken-Straße 3 23879 Mölln

Test Type: HEATING AIR CONDITIONING REFRIGERATION OTHER:
 Product Tested: HW LCH LCS CHW CHS AC CAC RU OTHER:

Type of Equipment:

Hydronic Heating Boiler With Indirect fired Domestic Hot Water Heater

 Buderus SB615 with a Weishaupt WG30n/1-C Burner

Test Start Date: 09/25/12
 Test End Date: 10/22/12
 No. of Days in Test: 28

BURNER RUN-TIME: in HRS. in MIN.
IntelliCon ON-DAYS: 64:44:58
IntelliCon OFF-DAYS: 82:03:59
 The Boilers Ran 21.10%
 More on the Off-Days

BURNER USAGE FACTOR:
IntelliCon On-Days: 19%
IntelliCon Off-Days: 24%

HEATING DEGREE-DAYS (FOR TEST PERIOD)
IntelliCon ON-DAYS: 120.11 It was 0.7% Warmer on the On-Days.
IntelliCon OFF-DAYS: 121.00
 Total: 241.11

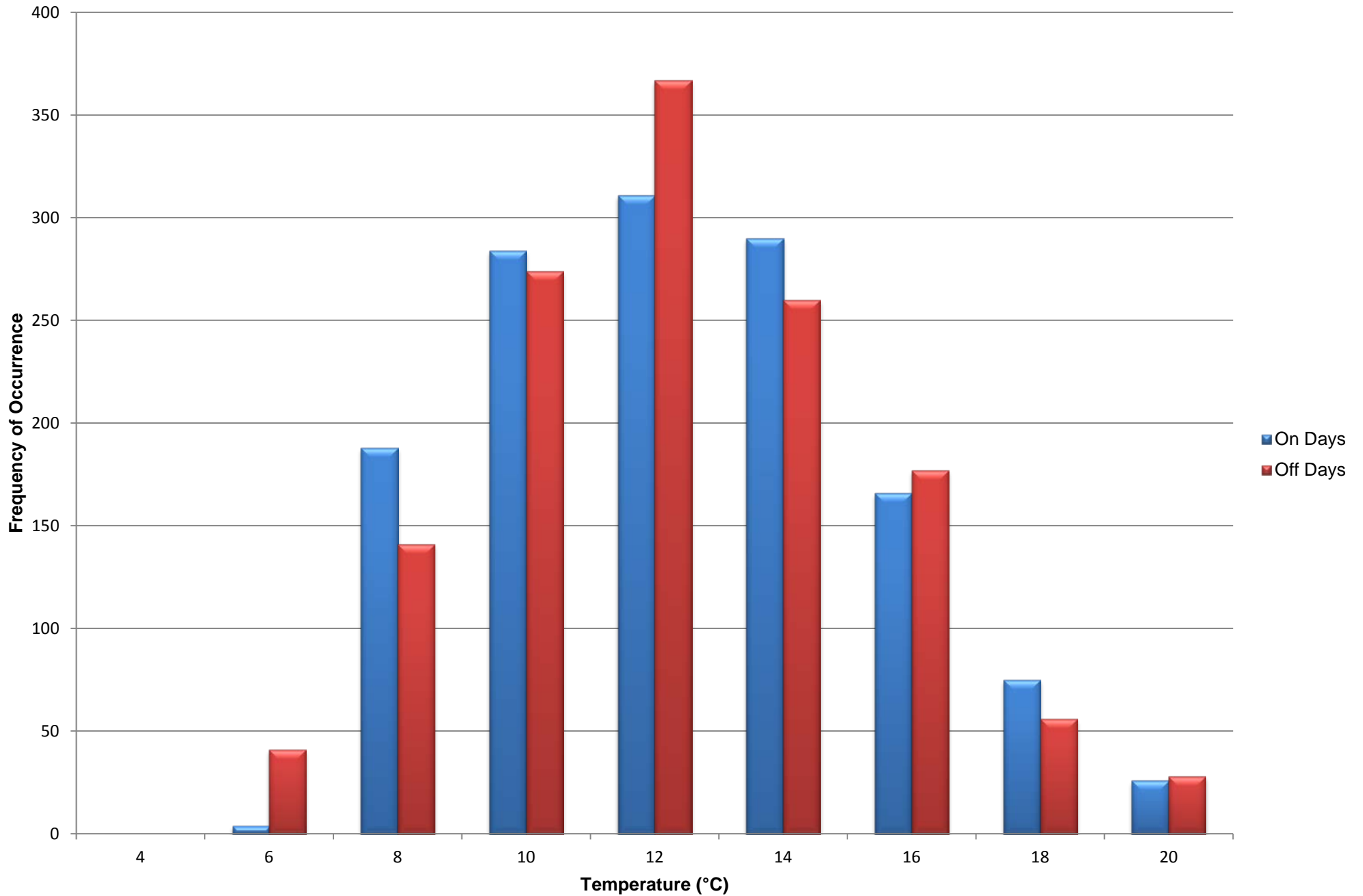
SOLAR INTENSITY IN LUX
IntelliCon ON-DAYS: 3706300
IntelliCon OFF-DAYS: 3686150 It was < 1% Sunnier on the On-Days.

BURNER CYCLING REDUCTION:
IntelliCon ON-DAYS: 561
IntelliCon OFF-DAYS: 745 Cycling was reduced by: 24.7%

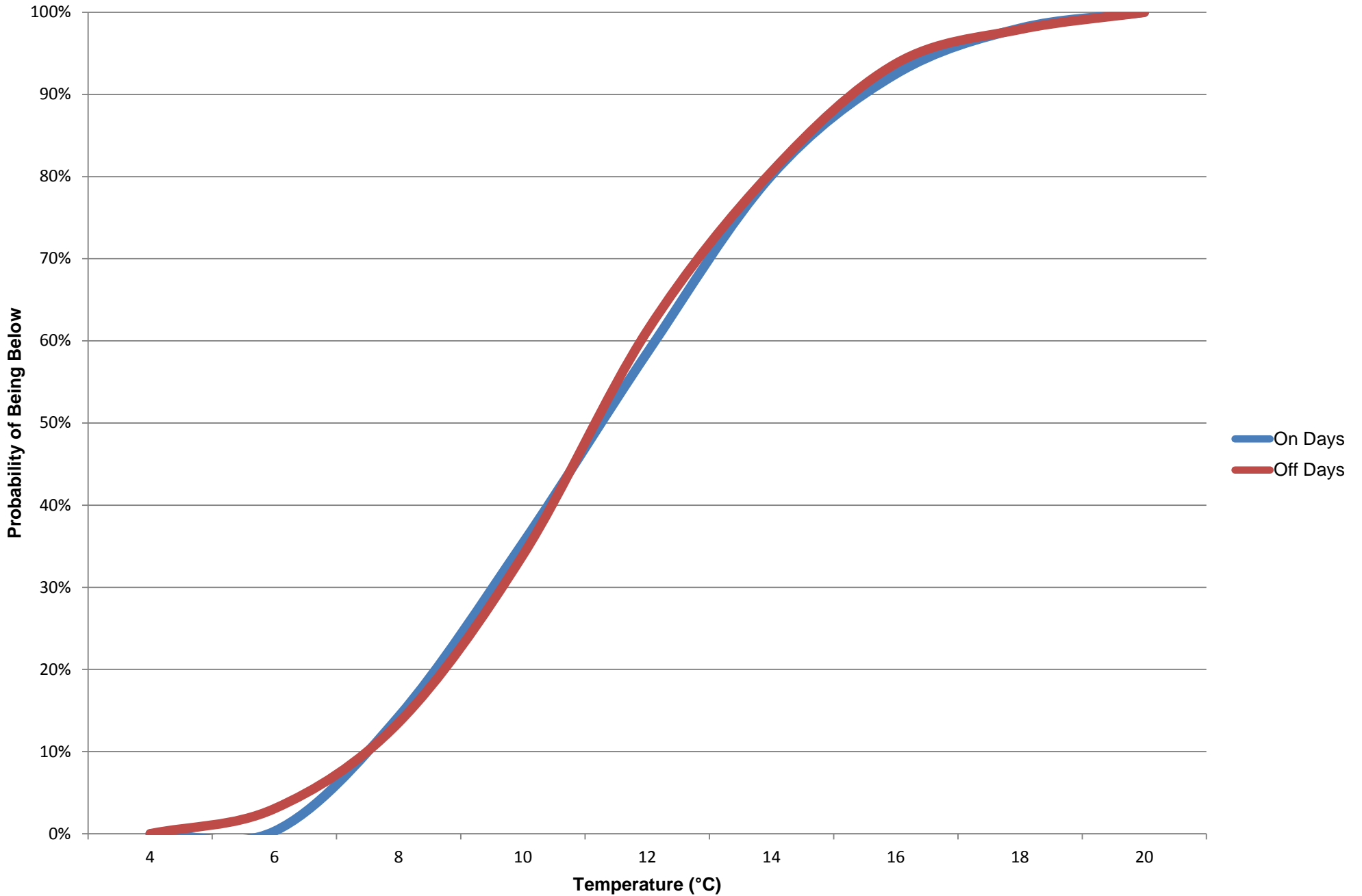
Savings = 20.52%

COMMENTS:

School Outdoor Air Temperature Histogram Test Period 09/25/2012 - 10/22/2012

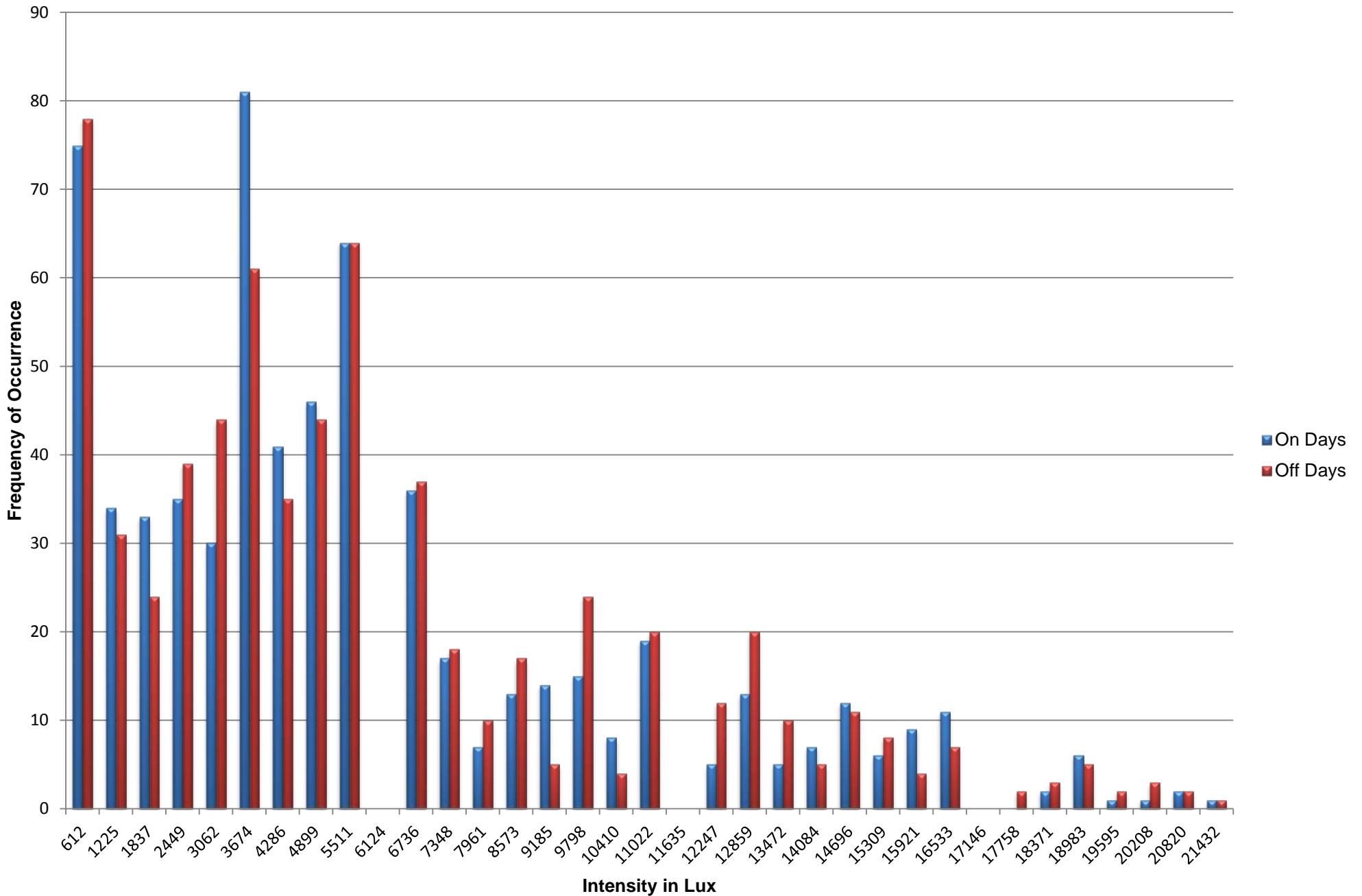


School Outdoor Air Temperature Probability Test Period 09/25/2012 - 10/22/2012



School Solar Histogram

Test Period 09/25/2012 - 10/22/2012



School Solar Probability Test Period 09/25/2012 - 10/22/2012

